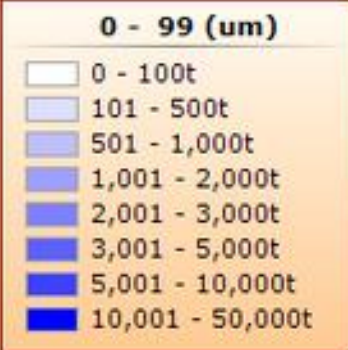
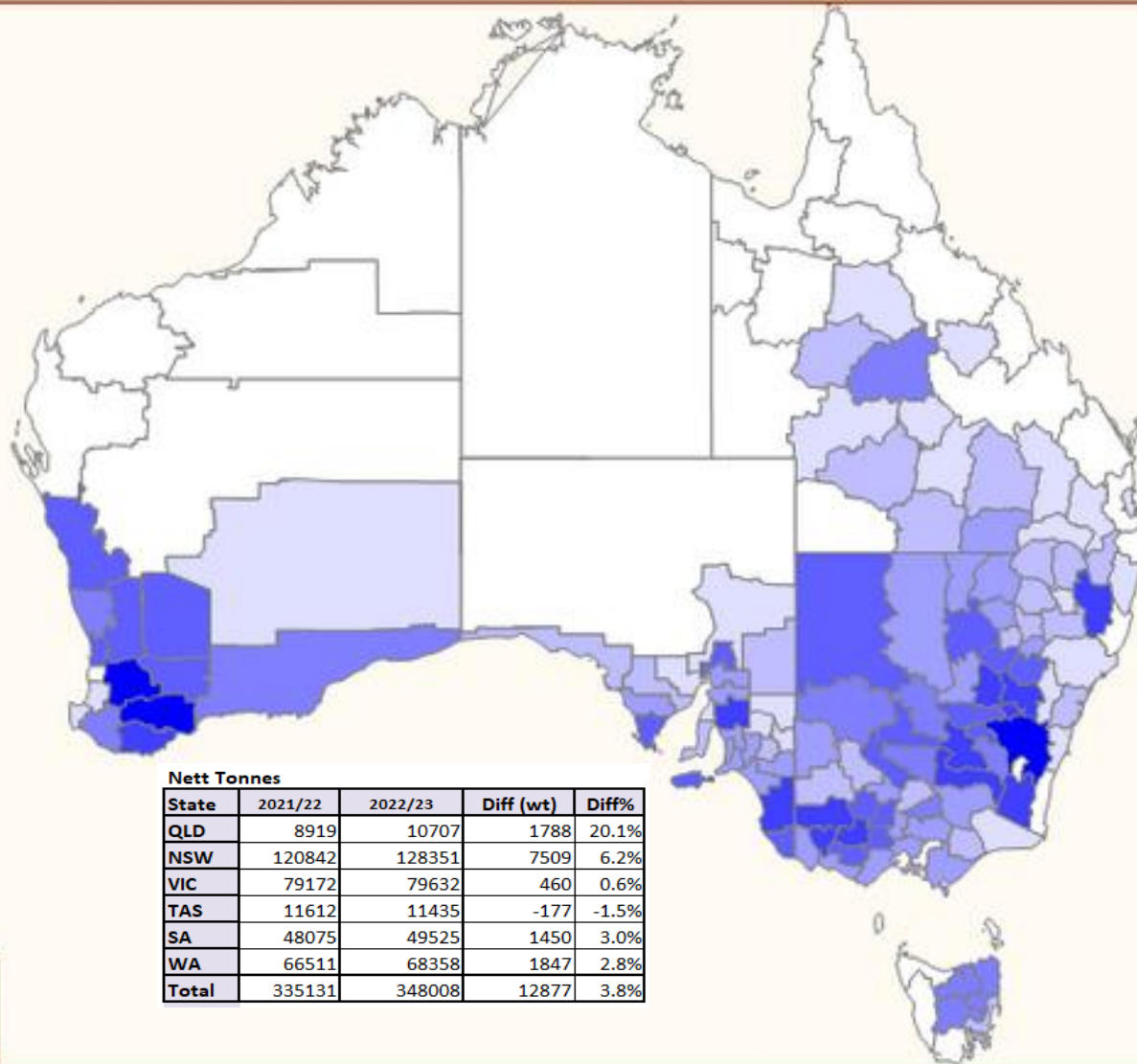


Wool Production by Tonnes (Season 2022-23)



Nett Tonnes

State	2021/22	2022/23	Diff (wt)	Diff%
QLD	8919	10707	1788	20.1%
NSW	120842	128351	7509	6.2%
VIC	79172	79632	460	0.6%
TAS	11612	11435	-177	-1.5%
SA	48075	49525	1450	3.0%
WA	66511	68358	1847	2.8%
Total	335131	348008	12877	3.8%





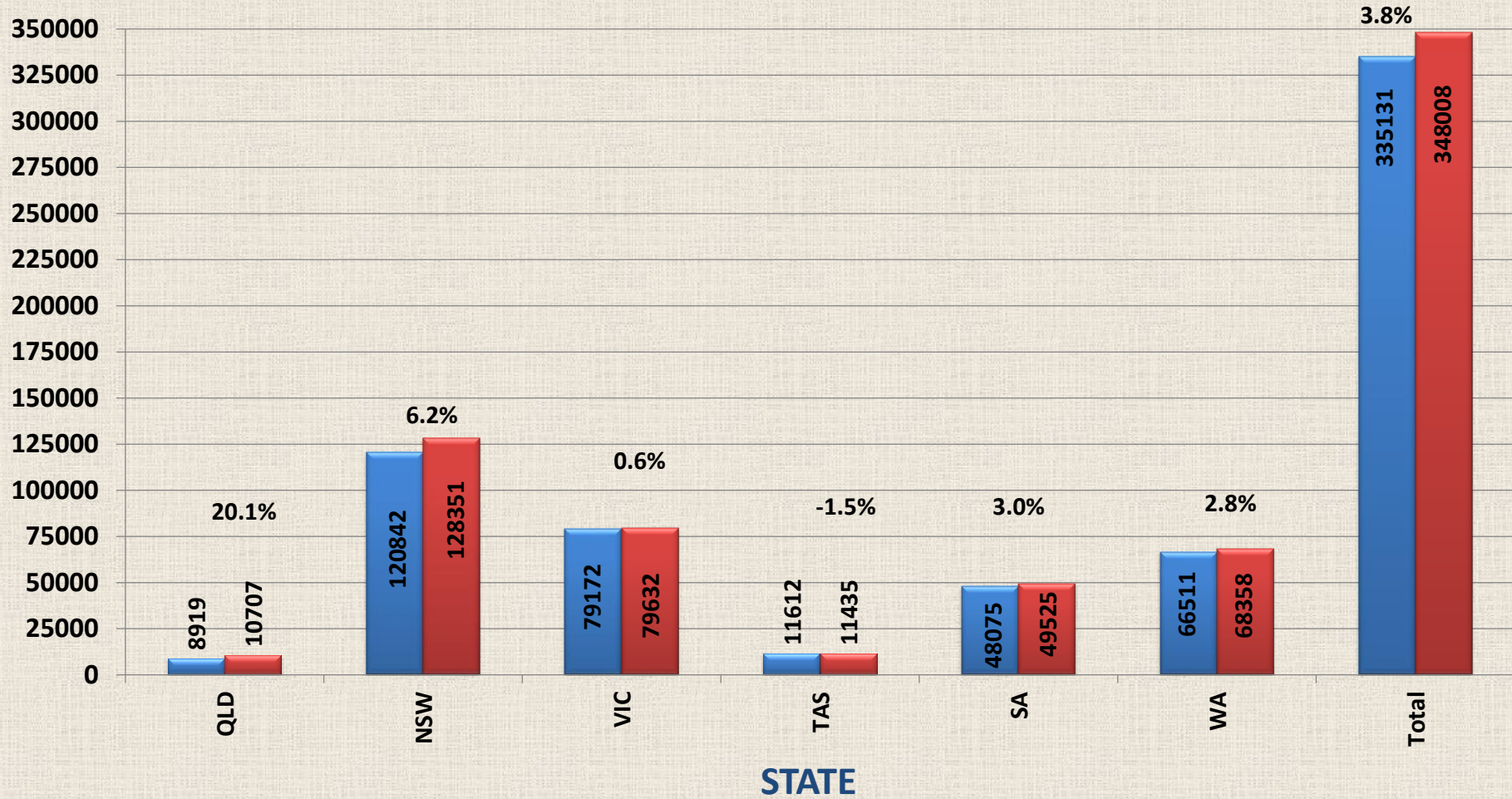
National Production by Wool Statistical Area

July to June - Nett tonnes for lots with declared information

■ 2021/22

■ 2022/23

NETT TONNES



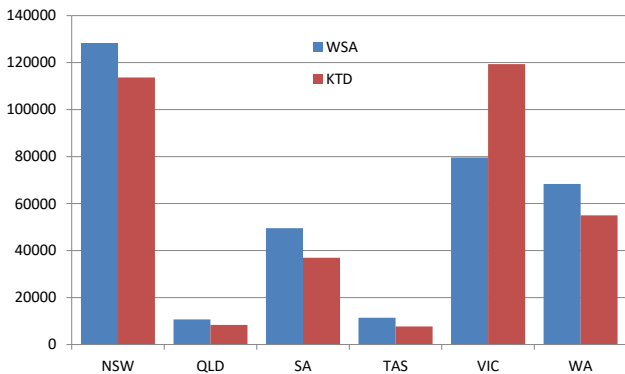


Wool Production by Nett Tonnes 2021/22 to 2022/23

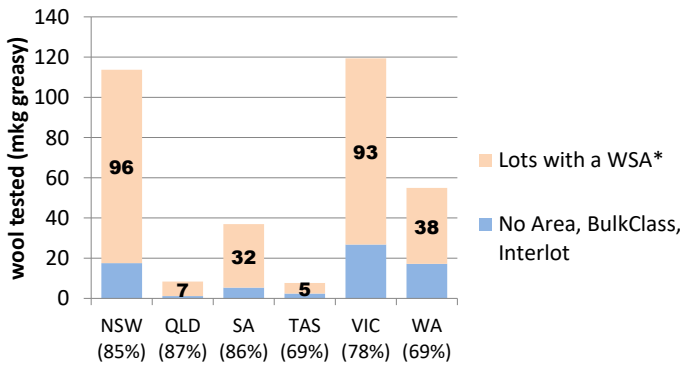
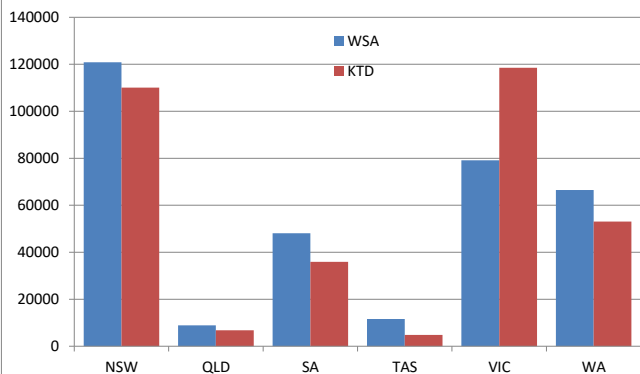
WSA v Sampling Centre (KTD) distribution

2022-23		WSA	WSA lots	No Area, BulkClass, Interlot	KTD	Lots with a WSA*	WSA Rate%	
NSW	NEW SOUTH WALES	128351	110826	17525	113663	96138	NSW (85%) 85%	
QLD	QUEENSLAND	10707	9578	1129	8375	7246	QLD (87%) 87%	
SA	SOUTH AUSTRALIA	49525	44192	5333	36959	31626	SA (86%) 86%	
TAS	TASMANIA	11435	9049	2386	7704	5318	TAS (69%) 69%	
VIC	VICTORIA	79632	52877	26755	119348	92593	VIC (78%) 78%	
WA	WESTERN AUSTRALIA	68358	51174	17184	54970	37786	WA (69%) 69%	
		348008	277696	70312	341019	270707	79%	
2021-22							YoY Change	3.6%
NSW	NEW SOUTH WALES	120842.36	104504.3	16338	110077	93738.892	NSW (85%) 85%	
QLD	QUEENSLAND	8918.56	7479.119	1439	6802	5362.559	QLD (79%) 79%	
SA	SOUTH AUSTRALIA	48075.2	44139.64	3936	35898	31962.422	SA (78%) 89%	
TAS	TASMANIA	11612.2	9212.144	2400	4843	2442.94	TAS (68%) 50%	
VIC	VICTORIA	79171.8	49910.68	29261	118516	89254.852	VIC (72%) 75%	
WA	WESTERN AUSTRALIA	66510.742	50643.77	15867	53092	37225.029	WA (65%) 70%	
		335130.86	265890	69241	329228	259986.738	79%	

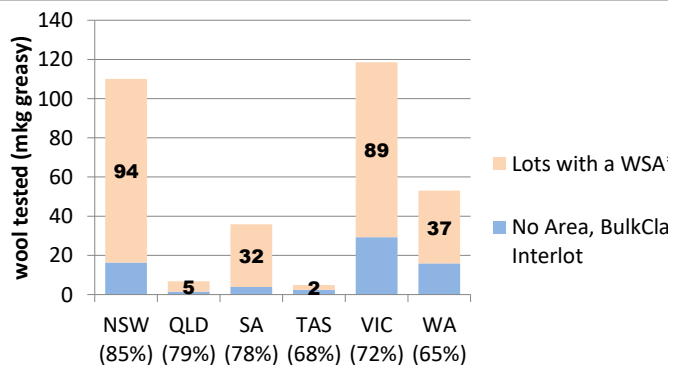
AWTA test data 2022-23 (tonnes greasy)



AWTA test data 2021-22 (tonnes greasy)

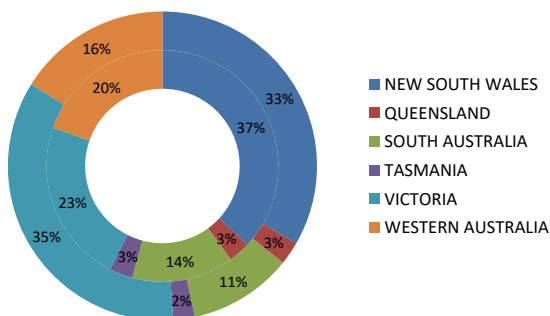


State where wool was stored & cored

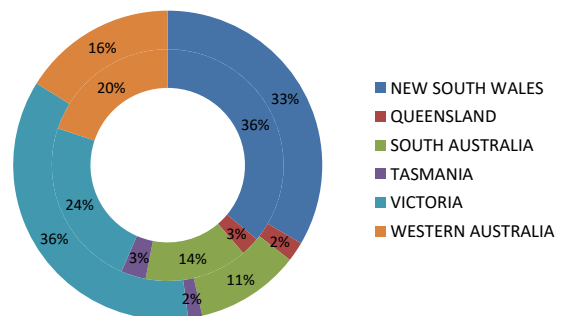


State where wool was stored & cored

AWTA test data 2022-23 [WSA (inner) and KTD (outer)]

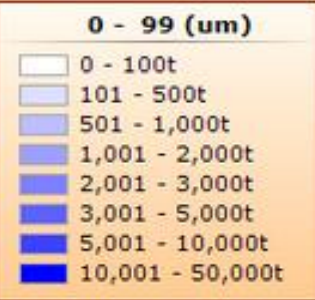
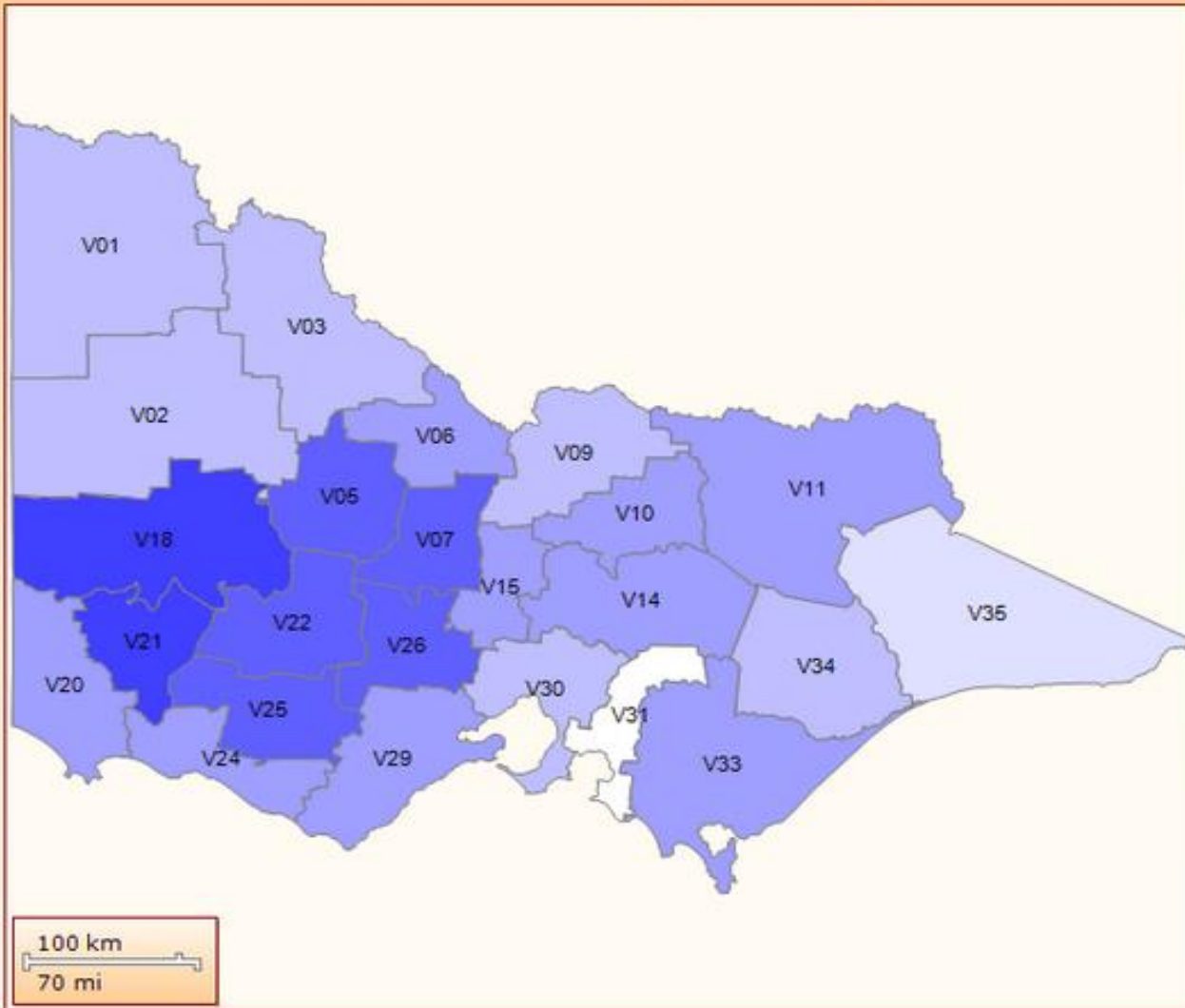


AWTA test data 2021-22 [WSA (inner) and KTD (outer)]





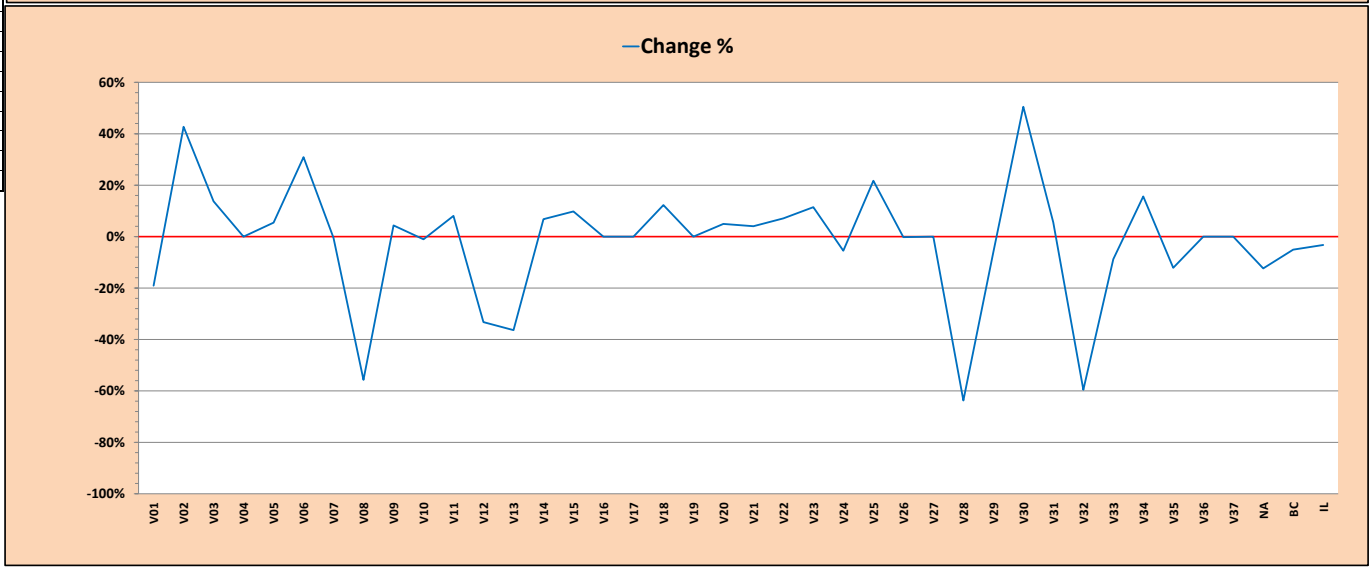
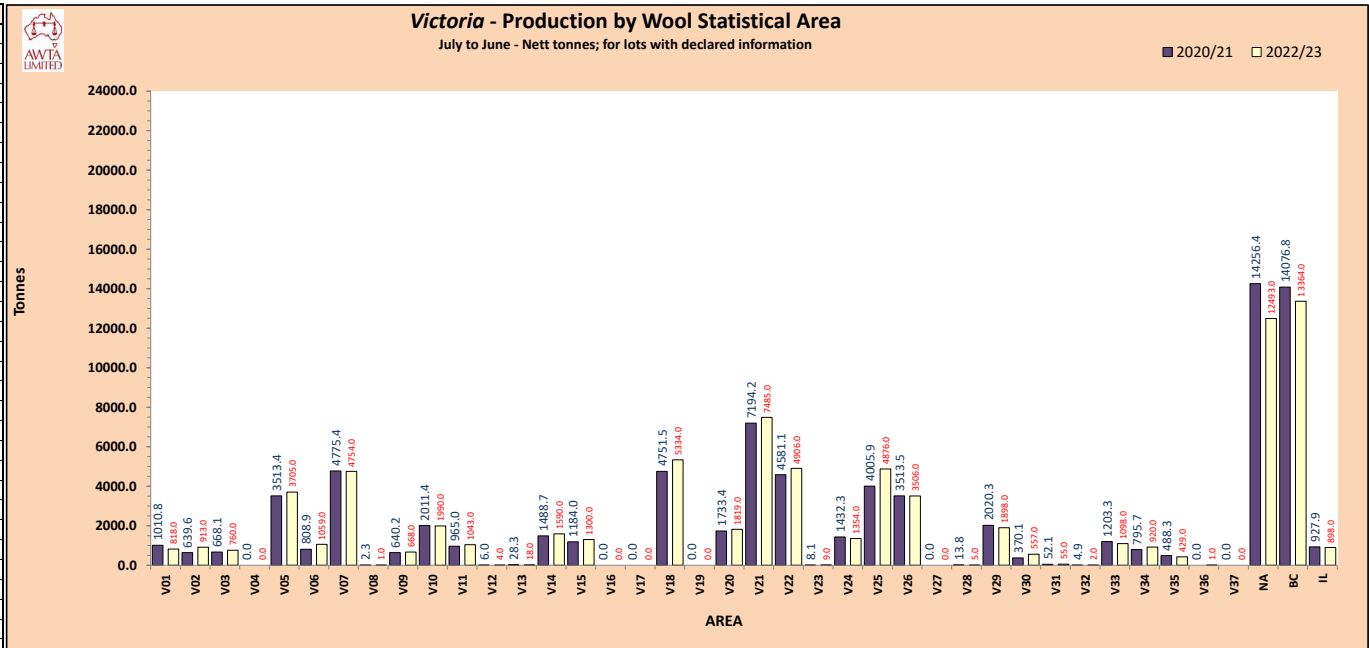
Wool Production by Tonnes (Season 2022-23)



Division	Area	2020/21	2022/23	Diff	Diff%
Nth - Mallee	V01	1010.8	818.0	-192.8	-19%
Wimmera	V02	639.6	913.0	273.4	43%
Nth - Mallee	V03	668.1	760.0	91.9	14%
Not Used	V04	0.0	0.0	0.0	0%
Loddon-Campaspe	V05	3513.4	3705.0	191.6	5%
Loddon-Campaspe	V06	808.9	1059.0	250.1	31%
Loddon-Campaspe	V07	4775.4	4754.0	-21.4	0%
Not Used	V08	2.3	1.0	-1.3	-56%
Goulburn	V09	640.2	668.0	27.8	4%
Goulburn	V10	2011.4	1990.0	-21.4	-1%
Nth Eastern	V11	965.0	1043.0	78.0	8%
Melbourne	V12	6.0	4.0	-2.0	-33%
Not Used	V13	28.3	18.0	-10.3	-36%
Goulburn	V14	1488.7	1590.0	101.3	7%
Loddon-Campaspe	V15	1184.0	1300.0	116.0	10%
Wimmera	V16	0.0	0.0	0.0	0%
Not Used	V17	0.0	0.0	0.0	0%
Wimmera	V18	4751.5	5334.0	582.5	12%
Not Used	V19	0.0	0.0	0.0	0%
Sth Western	V20	1733.4	1819.0	85.6	5%
Sth Western	V21	7194.2	7485.0	290.8	4%
Central	V22	4581.1	4906.0	325.0	7%
Sth Western	V23	8.1	9.0	0.9	11%
Sth Western	V24	1432.3	1354.0	-78.3	-5%
Sth Western	V25	4005.9	4876.0	870.1	22%
Central	V26	3513.5	3506.0	-7.5	0%
Not Used	V27	0.0	0.0	0.0	0%
Melbourne	V28	13.8	5.0	-8.8	-64%
Barwon	V29	2020.3	1898.0	-122.3	-6%
Melbourne	V30	370.1	557.0	186.9	50%
East Central	V31	52.1	55.0	2.9	6%
Not Used	V32	4.9	2.0	-2.9	-60%
Central Gippsland	V33	1203.3	1098.0	-105.3	-9%
East Gippsland	V34	795.7	920.0	124.3	16%
East Gippsland	V35	488.3	429.0	-59.3	-12%
Not Used	V36	0.0	1.0	1.0	0%
Not Used	V37	0.0	0.0	0.0	0%
Not Available	NA	14156.4	13493.0	-1763.4	-12%
Bulk Classed	BC	14076.8	13364.0	-712.8	-5%
Interlots	IL	927.9	898.0	-29.9	-3%
Total		79171.8	79632.0	460.2	0.6%
% Chg					0.6%

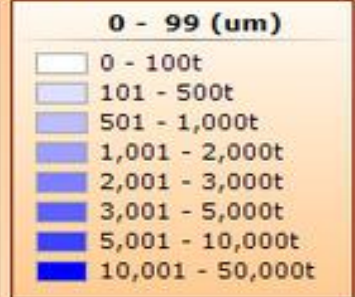
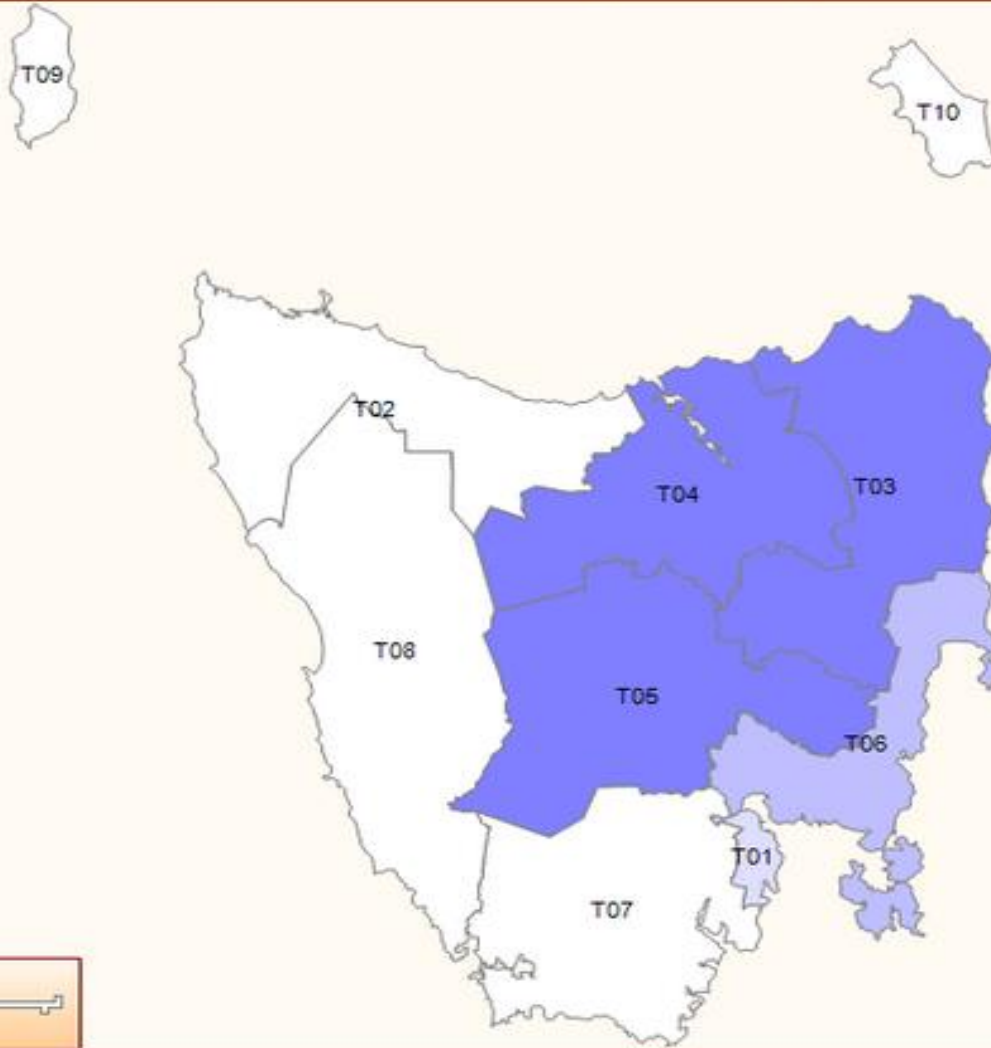
Victoria - Production by Wool Statistical Area - Nett Tonnes - July 22 to June 23

Division	Area	2020/21	2022/23	Diff	Diff%
Nth - Mallee	V01	1010.8	818.0	-192.8	-19%
Wimmera	V02	639.6	913.0	273.4	43%
Nth - Mallee	V03	668.1	760.0	91.9	14%
Not Used	V04	0.0	0.0	0.0	0%
Loddon-Campaspe	V05	3513.4	3705.0	191.6	5%
Loddon-Campaspe	V06	808.9	1059.0	250.1	31%
Loddon-Campaspe	V07	4775.4	4754.0	-21.4	0%
Not Used	V08	2.3	1.0	-1.3	-56%
Goulburn	V09	640.2	668.0	27.8	4%
Goulburn	V10	2011.4	1990.0	-21.4	-1%
Nth Eastern	V11	965.0	1043.0	78.0	8%
Melbourne	V12	6.0	4.0	-2.0	-33%
Not Used	V13	28.3	18.0	-10.3	-36%
Goulburn	V14	1488.7	1590.0	101.3	7%
Loddon-Campaspe	V15	1184.0	1300.0	116.0	10%
Wimmera	V16	0.0	0.0	0.0	0%
Not Used	V17	0.0	0.0	0.0	0%
Wimmera	V18	4751.5	5334.0	582.5	12%
Not Used	V19	0.0	0.0	0.0	0%
Sth Western	V20	1733.4	1819.0	85.6	5%
Sth Western	V21	7194.2	7485.0	290.8	4%
Central	V22	4581.1	4906.0	325.0	7%
Sth Western	V23	8.1	9.0	0.9	11%
Sth Western	V24	1432.3	1354.0	-78.3	-5%
Sth Western	V25	4005.9	4876.0	870.1	22%
Central	V26	3513.5	3506.0	-7.5	0%
Not Used	V27	0.0	0.0	0.0	0%
Melbourne	V28	13.8	5.0	-8.8	-64%
Barwon	V29	2020.3	1898.0	-122.3	-6%
Melbourne	V30	370.1	557.0	186.9	50%
East Central	V31	52.1	55.0	2.9	6%
Not Used	V32	4.9	2.0	-2.9	-60%
Central Gippsland	V33	1203.3	1098.0	-105.3	-9%
East Gippsland	V34	795.7	920.0	124.3	16%
East Gippsland	V35	488.3	429.0	-59.3	-12%
Not Used	V36	0.0	1.0	1.0	0%
Not Used	V37	0.0	0.0	0.0	0%
Not Available	NA	14256.4	12493.0	-1763.4	-12%
Bulk Classed	BC	14076.8	13364.0	-712.8	-5%
Interlots	IL	927.9	898.0	-29.9	-3%
Total		79171.8	79632.0	460.2	0.6%
% Chg					0.6%





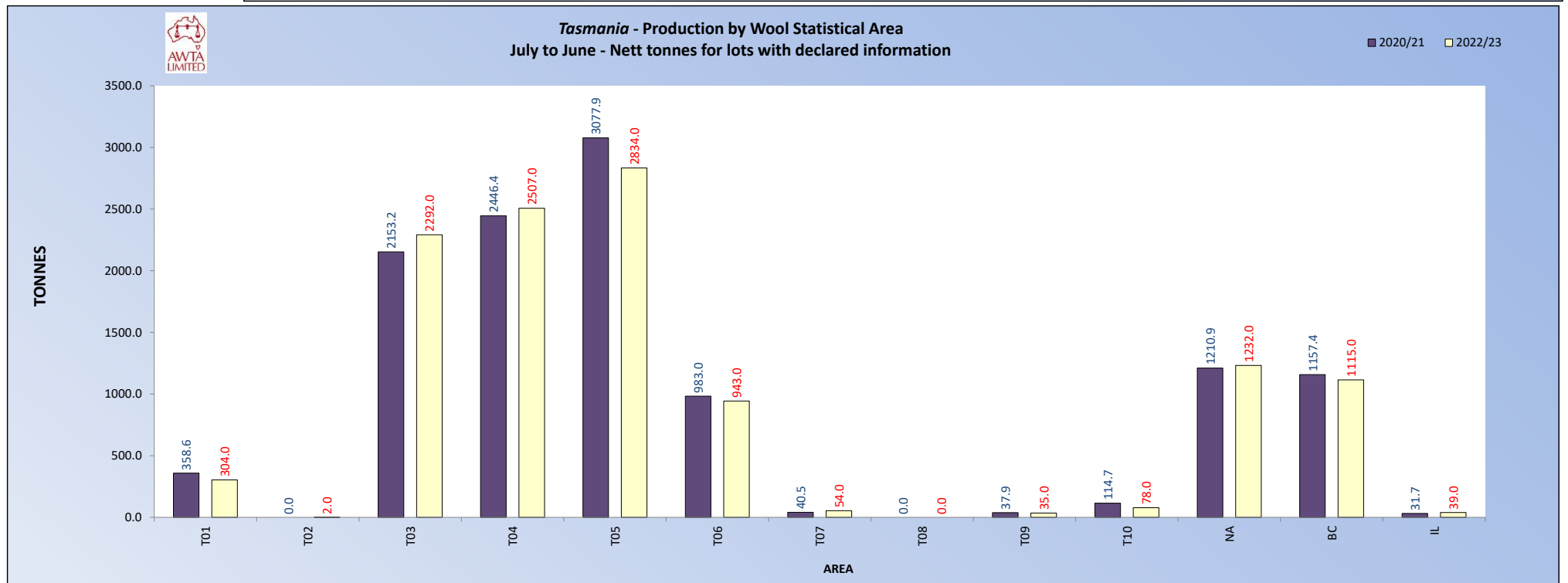
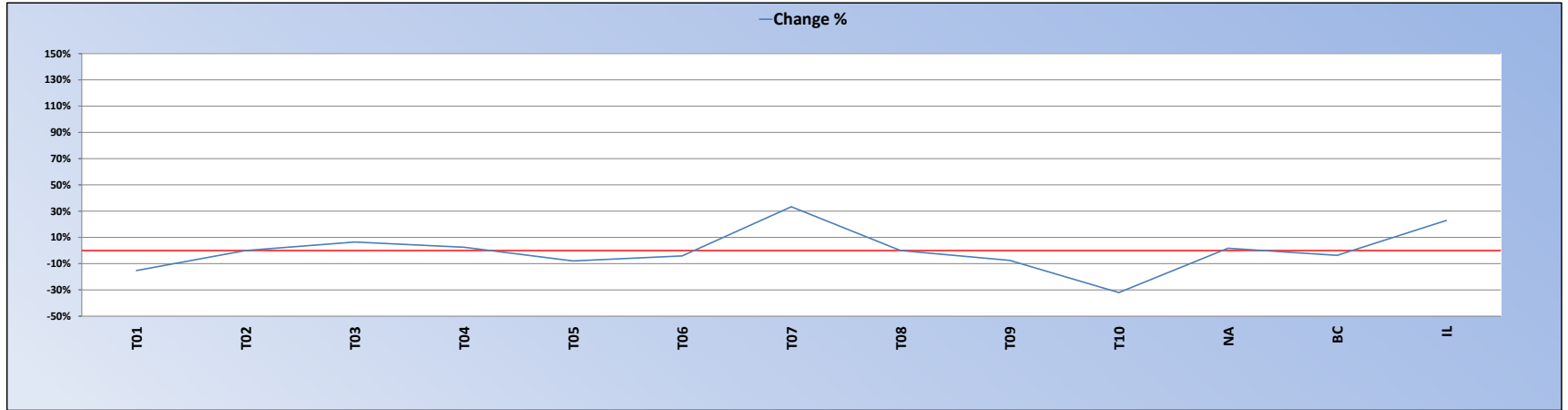
Wool Production by Tonnes (Season 2022-23)



Division	Area	2020/21	2022/23	Diff	Diff%
Hobart	T01	358.6	304.0	-54.6	-15%
Mersey-Lyell	T02	0.0	2.0	2.0	0%
Northern	T03	2153.2	2292.0	138.8	6%
Northern	T04	2446.4	2507.0	60.6	2%
Southern	T05	3077.9	2834.0	-243.9	-8%
Southern	T06	983.0	943.0	-40.0	-4%
Southern	T07	40.5	54.0	13.5	33%
Not Used	T08	0.0	0.0	0.0	0%
Mersey-Lyell	T09	37.9	35.0	-2.9	-8%
Northern	T10	114.7	78.0	-36.7	-32%
Not Available	NA	1210.9	1232.0	21.1	2%
Bulk Class	BC	1157.4	1115.0	-42.4	-4%
Interlot	IL	31.7	39.0	7.3	23%
Total		11612.2	11435.0	-177.2	-1.5%
	% Chg				

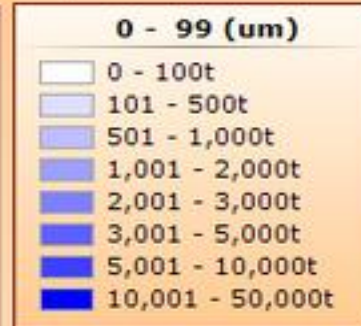
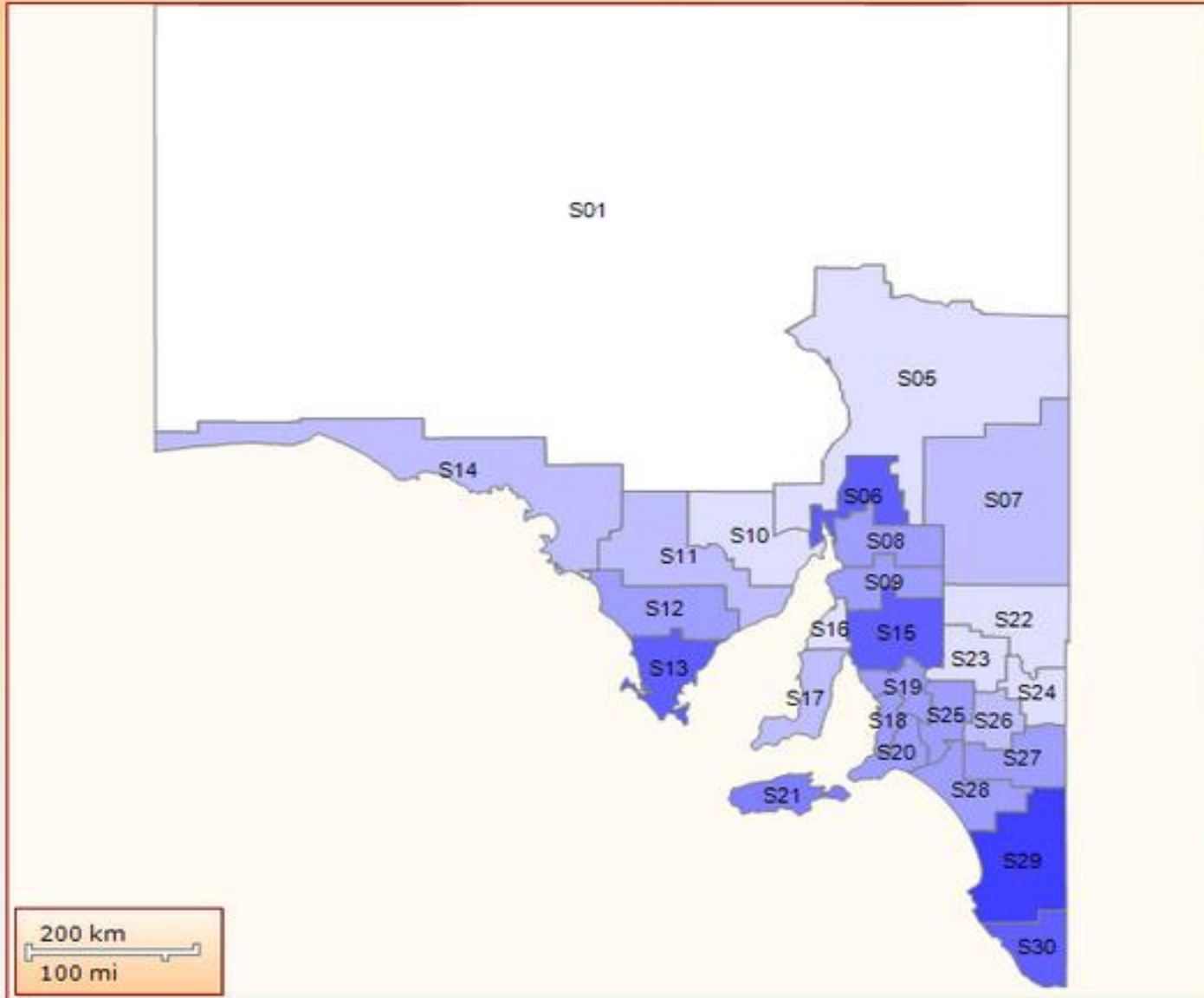
Tasmania - Production by Wool Statistical Area - Nett Tonnes - July 22 to June 23

Division	Area	2020/21	2022/23	Diff	Diff%
Hobart	T01	358.6	304.0	-54.6	-15%
Mersey-Lyell	T02	0.0	2.0	2.0	0%
Northern	T03	2153.2	2292.0	138.8	6%
Northern	T04	2446.4	2507.0	60.6	2%
Southern	T05	3077.9	2834.0	-243.9	-8%
Southern	T06	983.0	943.0	-40.0	-4%
Southern	T07	40.5	54.0	13.5	33%
Not Used	T08	0.0	0.0	0.0	0%
Mersey-Lyell	T09	37.9	35.0	-2.9	-8%
Northern	T10	114.7	78.0	-36.7	-32%
Not Available	NA	1210.9	1232.0	21.1	2%
Bulk Class	BC	1157.4	1115.0	-42.4	-4%
Interlot	IL	31.7	39.0	7.3	23%
Total		11612.2	11435.0	-177.2	-1.5%
% Chg					





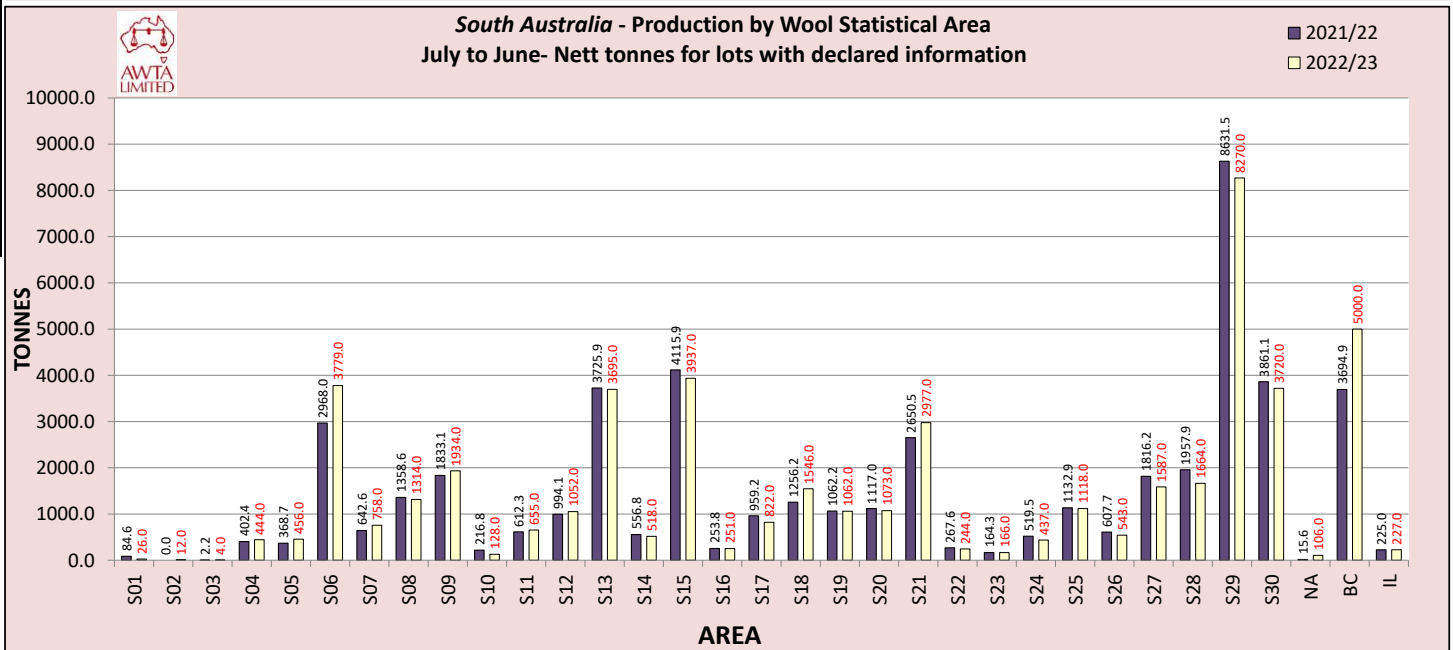
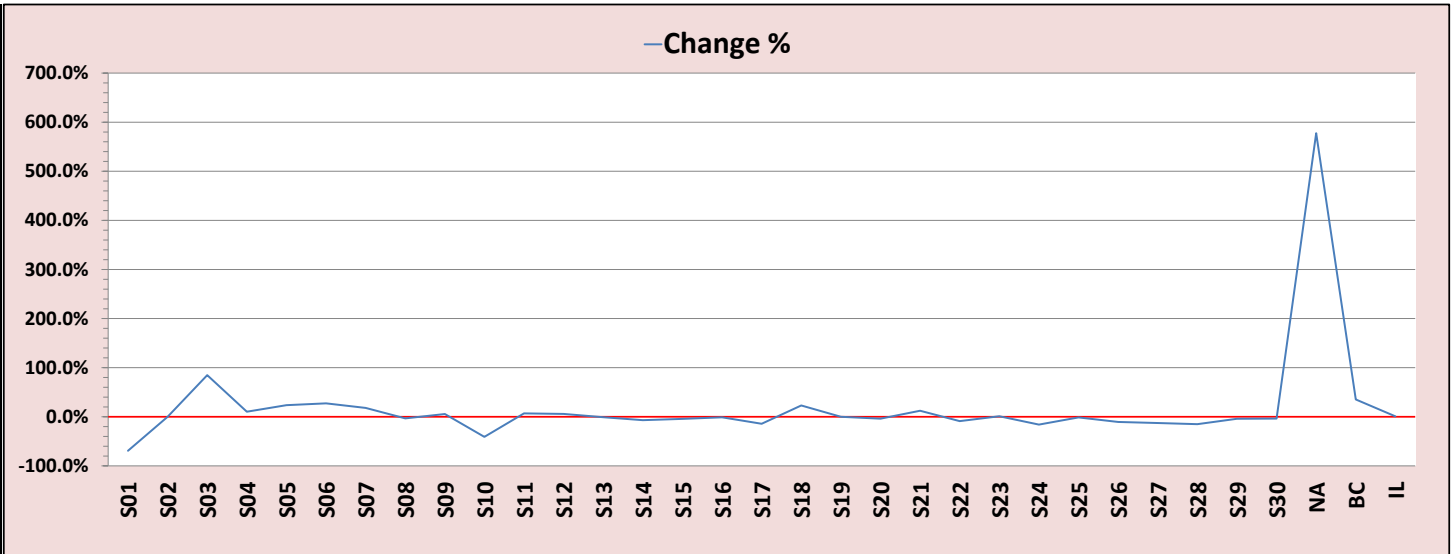
Wool Production by Tonnes (Season 2022-23)



Division	Area	2021/22	2022/23	Diff	Diff%
Far North	S01	84.6	26.0	-58.6	-69.3%
Far North	S02	0.0	12.0	12.0	0.0%
Far North	S03	2.2	4.0	1.8	84.8%
Far North	S04	402.4	444.0	41.6	10.3%
Northern	S05	368.7	456.0	87.3	23.7%
Northern	S06	2968.0	3779.0	811.0	27.3%
Northern	S07	642.6	758.0	115.4	18.0%
Northern	S08	1358.6	1314.0	-44.6	-3.3%
Northern	S09	1833.1	1934.0	100.9	5.5%
Northern	S10	216.8	128.0	-88.8	-41.0%
Eyre	S11	612.3	655.0	42.7	7.0%
Eyre	S12	994.1	1052.0	58.0	5.8%
Eyre	S13	3725.9	3695.0	-30.9	-0.8%
Eyre	S14	556.8	518.0	-38.8	-7.0%
Yorke & Lower Nth	S15	4115.9	3937.0	-178.9	-4.3%
Yorke & Lower Nth	S16	253.8	251.0	-2.8	-1.1%
Yorke & Lower Nth	S17	959.2	822.0	-137.2	-14.3%
Adelaide	S18	1256.2	1546.0	289.8	23.1%
Outer Adelaide	S19	1062.2	1062.0	-0.2	0.0%
Outer Adelaide	S20	1117.0	1073.0	-44.0	-3.9%
Outer Adelaide	S21	2650.5	2977.0	326.5	12.3%
Murray Lands	S22	267.6	244.0	-23.6	-8.8%
Murray Lands	S23	164.3	166.0	1.7	1.0%
Murray Lands	S24	519.5	437.0	-82.5	-15.9%
Murray Lands	S25	1132.9	1118.0	-14.9	-1.3%
Murray Lands	S26	607.7	543.0	-64.7	-10.7%
Murray Lands	S27	1816.2	1587.0	-229.2	-12.6%
Murray Lands	S28	1957.9	1664.0	-293.9	-15.0%
Sth East	S29	8631.5	8270.0	-361.5	-4.2%
Sth East	S30	3861.1	3720.0	-141.1	-3.7%
Not Available	NA	15.6	106.0	90.4	577.6%
Bulk Class	BC	3694.9	5000.0	1305.1	35.3%
Interlot	IL	225.0	227.0	2.0	0.9%
Total		48075.2	49525	1449.8	3.0%
% Chg					2.9%

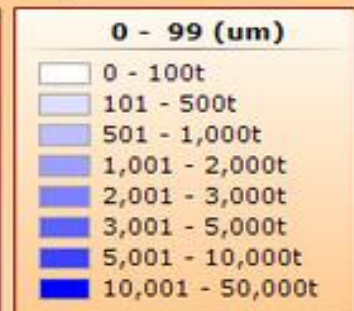
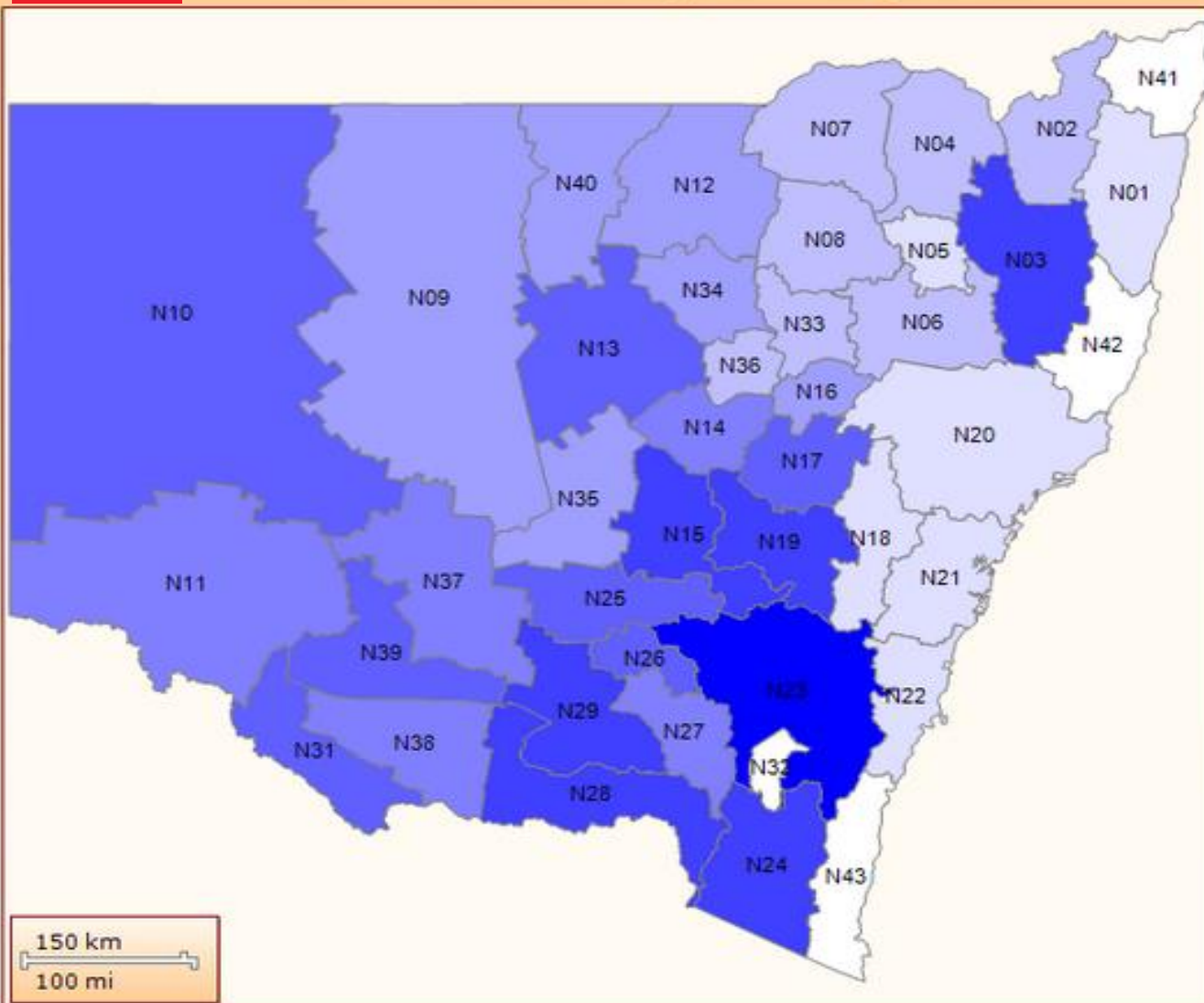
South Australia - Production by Wool Statistical Area - Nett Tonnes - July 22 to June 23

Division	Area	2021/22	2022/23	Diff	Diff%
Far North	S01	84.6	26.0	-58.6	-69.3%
Far North	S02	0.0	12.0	12.0	0.0%
Far North	S03	2.2	4.0	1.8	84.8%
Far North	S04	402.4	444.0	41.6	10.3%
Northern	S05	368.7	456.0	87.3	23.7%
Northern	S06	2968.0	3779.0	811.0	27.3%
Northern	S07	642.6	758.0	115.4	18.0%
Northern	S08	1358.6	1314.0	-44.6	-3.3%
Northern	S09	1833.1	1934.0	100.9	5.5%
Northern	S10	216.8	128.0	-88.8	-41.0%
Eyre	S11	612.3	655.0	42.7	7.0%
Eyre	S12	994.1	1052.0	58.0	5.8%
Eyre	S13	3725.9	3695.0	-30.9	-0.8%
Eyre	S14	556.8	518.0	-38.8	-7.0%
Yorke & Lower Nth	S15	4115.9	3937.0	-178.9	-4.3%
Yorke & Lower Nth	S16	253.8	251.0	-2.8	-1.1%
Yorke & Lower Nth	S17	959.2	822.0	-137.2	-14.3%
Adelaide	S18	1256.2	1546.0	289.8	23.1%
Outer Adelaide	S19	1062.2	1062.0	-0.2	0.0%
Outer Adelaide	S20	1117.0	1073.0	-44.0	-3.9%
Outer Adelaide	S21	2650.5	2977.0	326.5	12.3%
Murray Lands	S22	267.6	244.0	-23.6	-8.8%
Murray Lands	S23	164.3	166.0	1.7	1.0%
Murray Lands	S24	519.5	437.0	-82.5	-15.9%
Murray Lands	S25	1132.9	1118.0	-14.9	-1.3%
Murray Lands	S26	607.7	543.0	-64.7	-10.7%
Murray Lands	S27	1816.2	1587.0	-229.2	-12.6%
Murray Lands	S28	1957.9	1664.0	-293.9	-15.0%
Sth East	S29	8631.5	8270.0	-361.5	-4.2%
Sth East	S30	3861.1	3720.0	-141.1	-3.7%
Not Available	NA	15.6	106.0	90.4	577.6%
Bulk Class	BC	3694.9	5000.0	1305.1	35.3%
Interlot	IL	225.0	227.0	2.0	0.9%
Total		48075.2	49525	1449.8	3.0%
% Chg			2.9%		





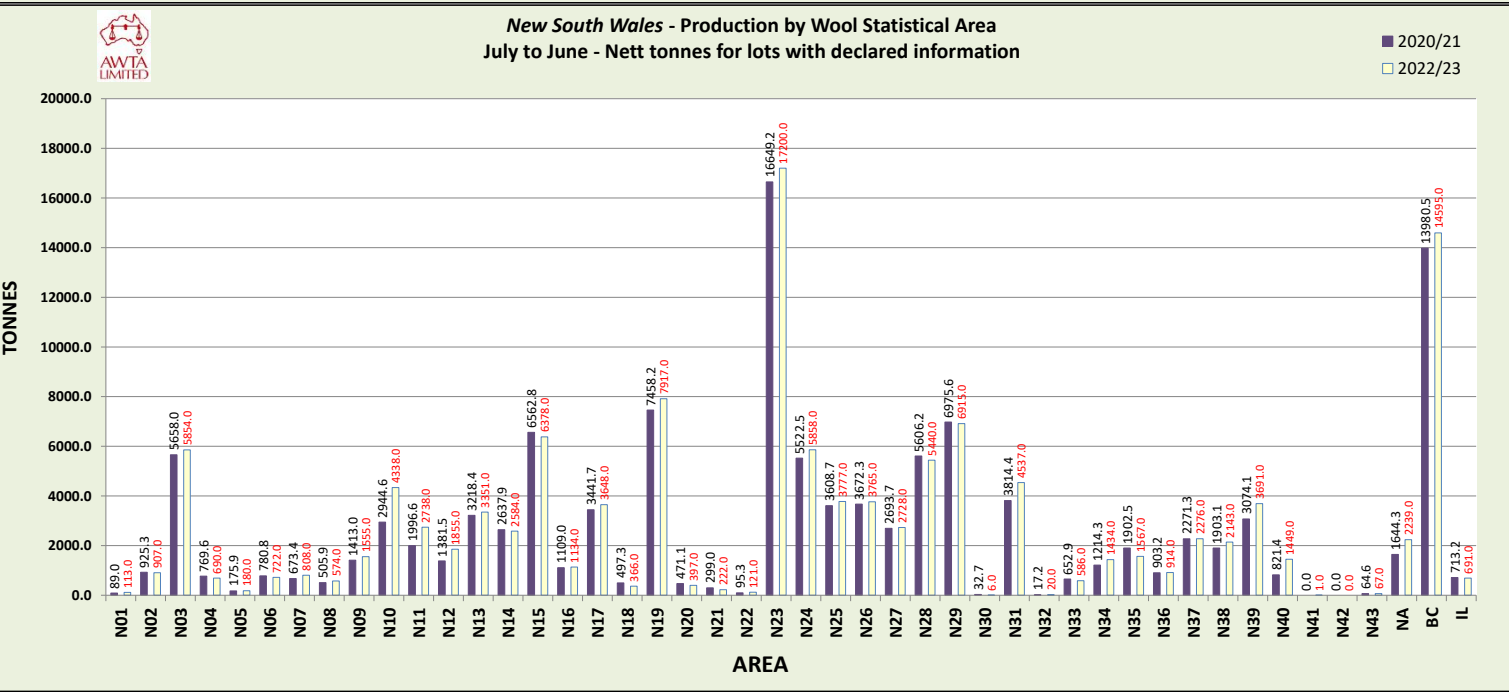
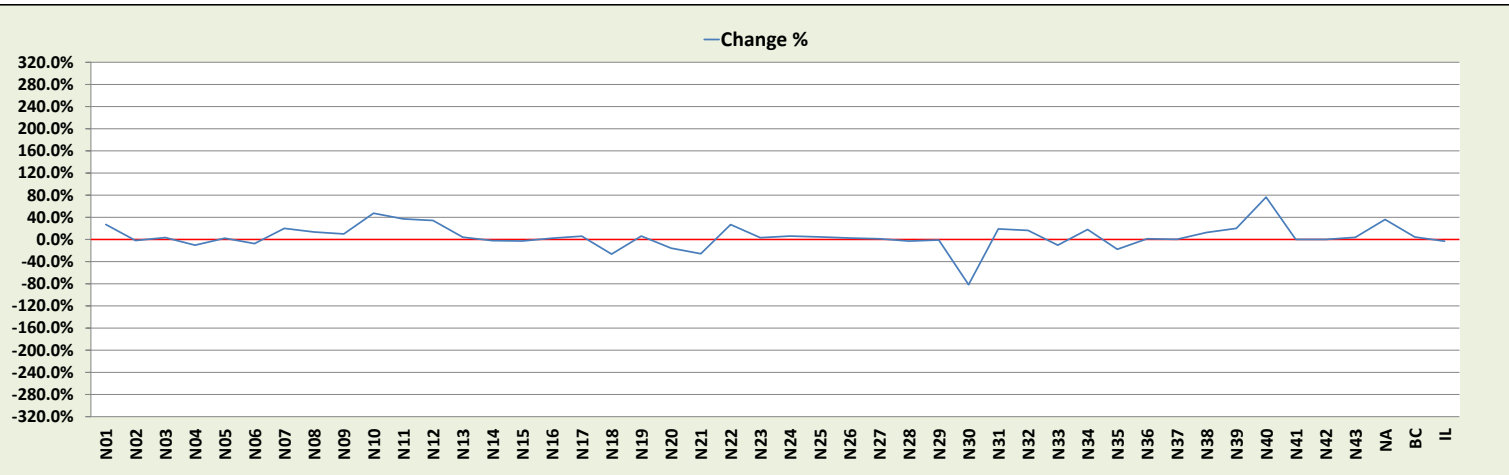
Wool Production by Tonnes (Season 2022-23)



Division	Area	2020/21	2022/23	Diff	Diff%
Mid-North Coast	N01	89.0	113.0	24.0	27.0%
Northern	N02	925.3	907.0	-18.3	-2.0%
Northern	N03	5658.0	5854.0	196.0	3.5%
Northern	N04	769.6	690.0	-79.6	-10.3%
Northern	N05	175.9	180.0	4.1	2.3%
Northern	N06	780.8	722.0	-58.8	-7.5%
Northern	N07	673.4	808.0	134.6	20.0%
Northern	N08	505.9	574.0	68.1	13.5%
Nth Western	N09	1413.0	1555.0	142.0	10.0%
Far West	N10	2944.6	4338.0	1393.4	47.3%
Murray	N11	1996.6	2738.0	741.4	37.1%
Nth Western	N12	1381.5	1855.0	473.5	34.3%
Nth Western	N13	3218.4	3351.0	132.6	4.1%
Nth Western	N14	2637.9	2584.0	-53.9	-2.0%
Central West	N15	6562.8	6378.0	-184.8	-2.8%
Nth Western	N16	1109.0	1134.0	25.0	2.3%
Nth Western	N17	3441.7	3648.0	206.3	6.0%
Central West	N18	497.3	366.0	-131.3	-26.4%
Central West	N19	7458.2	7917.0	458.8	6.2%
Hunter	N20	471.1	397.0	-74.1	-15.7%
Sydney	N21	299.0	222.0	-77.0	-25.8%
Illawarra	N22	95.3	121.0	25.7	27.0%
Sth Eastern	N23	16649.2	17200.0	550.8	3.3%
Sth Eastern	N24	5522.5	5858.0	335.5	6.1%
Central West	N25	3608.7	3777.0	168.3	4.7%
Murrumbidgee	N26	3672.3	3765.0	92.7	2.5%
Murrumbidgee	N27	2693.7	2728.0	34.3	1.3%
Murray	N28	5606.2	5440.0	-166.2	-3.0%
Murrumbidgee	N29	6975.6	6915.0	-60.6	-0.9%
Murrumbidgee	N30	32.7	6.0	-26.7	-81.7%
Murray	N31	3814.4	4537.0	722.6	18.9%
A.C.T.	N32	17.2	20.0	2.8	16.4%
Nth Western	N33	652.9	586.0	-66.9	-10.3%
Nth Western	N34	1214.3	1434.0	219.7	18.1%
Central West	N35	1902.5	1567.0	-335.5	-17.6%
Nth Western	N36	903.2	914.0	10.8	1.2%
Murrumbidgee	N37	2271.3	2276.0	4.7	0.2%
Murray	N38	1903.1	2143.0	239.9	12.6%
Murrumbidgee	N39	3074.1	3691.0	616.9	20.1%
Nth Western	N40	821.4	1449.0	627.6	76.4%
Richmond-Tweed	N41	0.0	1.0	1.0	0.0%
Mid-North Coast	N42	0.0	0.0	0.0	0.0%
Sth Eastern	N43	64.6	67.0	2.4	3.7%
Not Available	NA	1644.8	2239.0	594.2	36.2%
Bulk Class	BC	13980.5	14595.0	614.5	4.4%
Interlot	IL	713.2	691.0	-22.2	-3.1%
	Total	120842.4	128351.0	7508.6	6.2%
	% Chg				5.9%

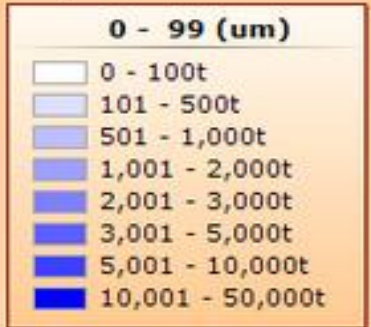
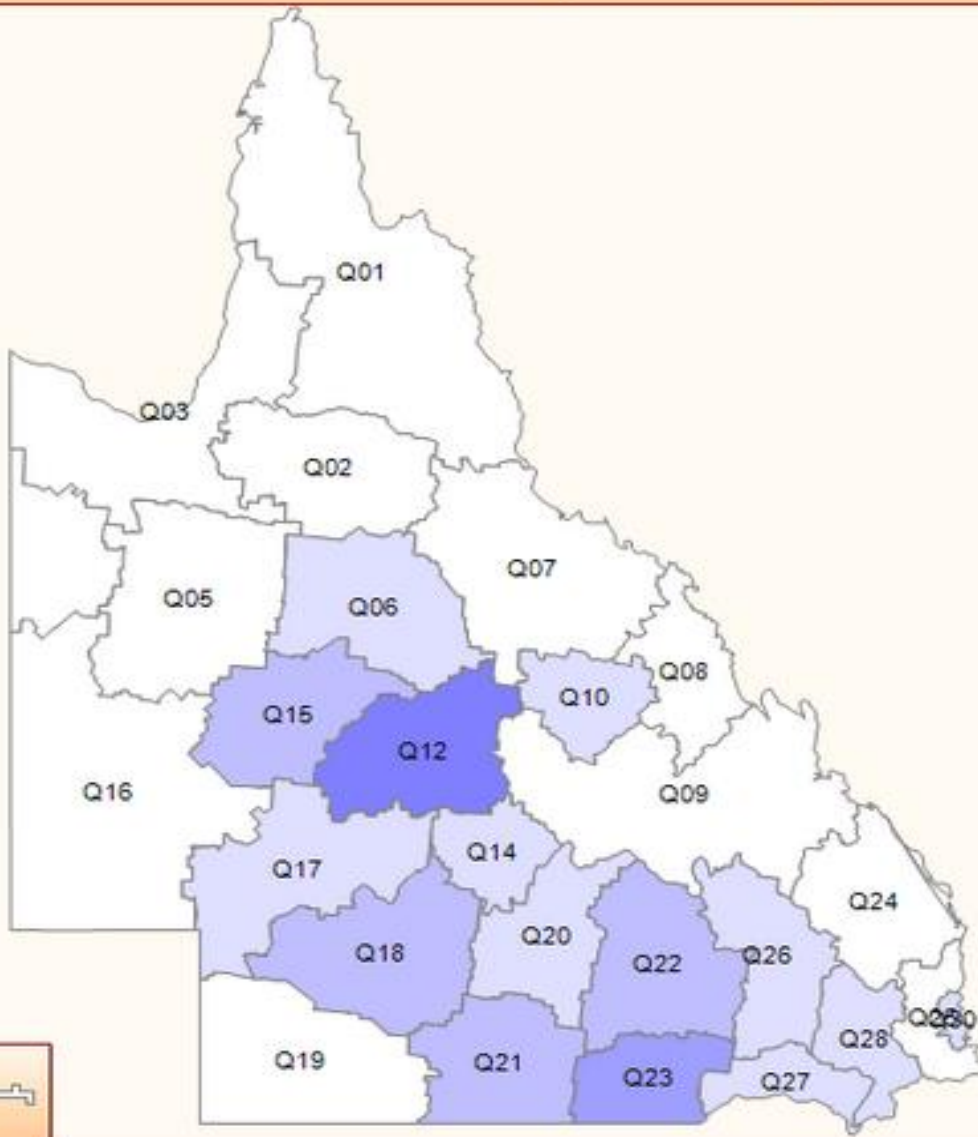
New South Wales - Production by Wool Statistical Area - Nett Tonnes - July 22 to June 23

Division	Area	2020/21	2022/23	Diff	Diff%
Mid-North Coast	N01	89.0	113.0	24.0	27.0%
Northern	N02	925.3	907.0	-18.3	-2.0%
Northern	N03	5658.0	5854.0	196.0	3.5%
Northern	N04	769.6	690.0	-79.6	-10.3%
Northern	N05	175.9	180.0	4.1	2.3%
Northern	N06	780.8	722.0	-58.8	-7.5%
Northern	N07	673.4	808.0	134.6	20.0%
Northern	N08	505.9	574.0	68.1	13.5%
Nth Western	N09	1413.0	1555.0	142.0	10.0%
Far West	N10	2944.6	4338.0	1393.4	47.3%
Murray	N11	1996.6	2738.0	741.4	37.1%
Nth Western	N12	1381.5	1855.0	473.5	34.3%
Nth Western	N13	3218.4	3351.0	132.6	4.1%
Nth Western	N14	2637.9	2584.0	-53.9	-2.0%
Central West	N15	6562.8	6378.0	-184.8	-2.8%
Nth Western	N16	1109.0	1134.0	25.0	2.3%
Nth Western	N17	3441.7	3648.0	206.3	6.0%
Central West	N18	497.3	366.0	-131.3	-26.4%
Central West	N19	7458.2	7917.0	458.8	6.2%
Hunter	N20	471.1	397.0	-74.1	-15.7%
Sydney	N21	299.0	222.0	-77.0	-25.8%
Illawarra	N22	95.3	121.0	25.7	27.0%
Sth Eastern	N23	16649.2	17200.0	550.8	3.3%
Sth Eastern	N24	5522.5	5858.0	335.5	6.1%
Central West	N25	3608.7	3777.0	168.3	4.7%
Murrumbidgee	N26	3672.3	3765.0	92.7	2.5%
Murrumbidgee	N27	2693.7	2728.0	34.3	1.3%
Murray	N28	5606.2	5440.0	-166.2	-3.0%
Murrumbidgee	N29	6975.6	6915.0	-60.6	-0.9%
Murrumbidgee	N30	32.7	6.0	-26.7	-81.7%
Murray	N31	3814.4	4537.0	722.6	18.9%
A.C.T.	N32	17.2	20.0	2.8	16.4%
Nth Western	N33	652.9	586.0	-66.9	-10.3%
Nth Western	N34	1214.3	1434.0	219.7	18.1%
Central West	N35	1902.5	1567.0	-335.5	-17.6%
Nth Western	N36	903.2	914.0	10.8	1.2%
Murrumbidgee	N37	2271.3	2276.0	4.7	0.2%
Murray	N38	1903.1	2143.0	239.9	12.6%
Murrumbidgee	N39	3074.1	3691.0	616.9	20.1%
Nth Western	N40	821.4	1449.0	627.6	76.4%
Richmond-Tweed	N41	0.0	1.0	1.0	0.0%
Mid-North Coast	N42	0.0	0.0	0.0	0.0%
Sth Eastern	N43	64.6	67.0	2.4	3.7%
Not Available	NA	1644.3	2239.0	594.7	36.2%
Bulk Class	BC	13980.5	14595.0	614.5	4.4%
Interlot	IL	713.2	691.0	-22.2	-3.1%
Total		120842.4	128351.0	7508.6	6.2%
% Chg			5.9%		





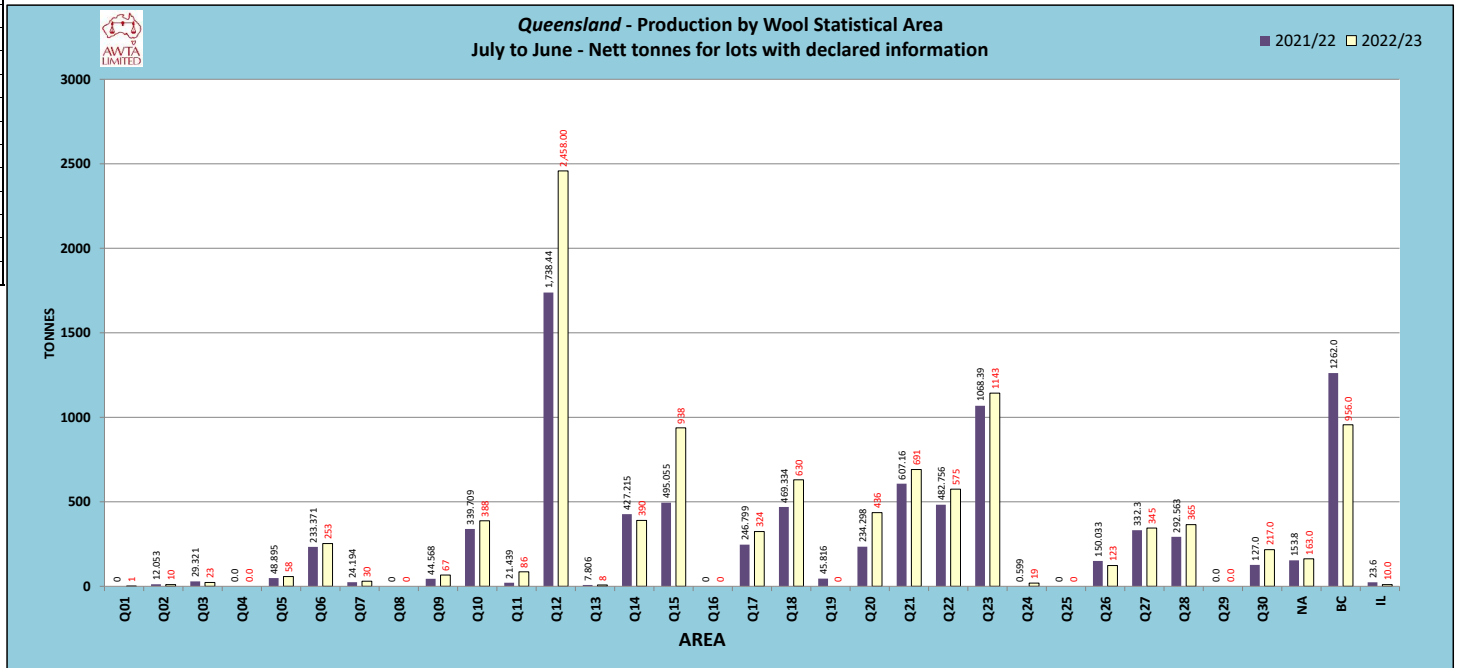
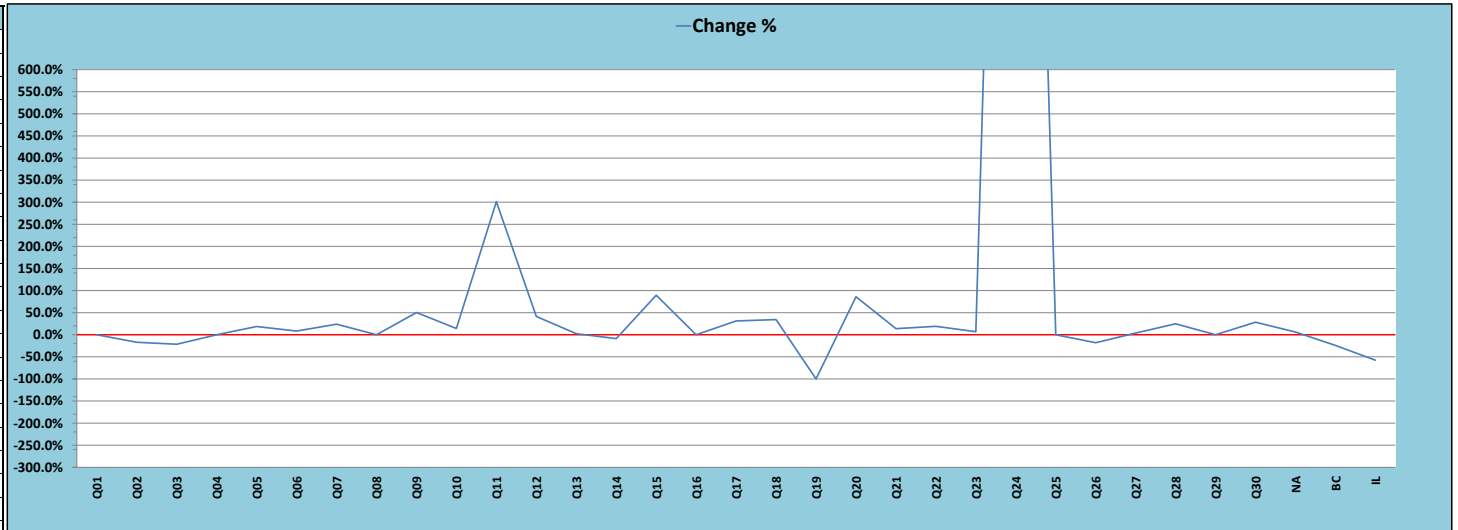
Wool Production by Tonnes (Season 2022-23)



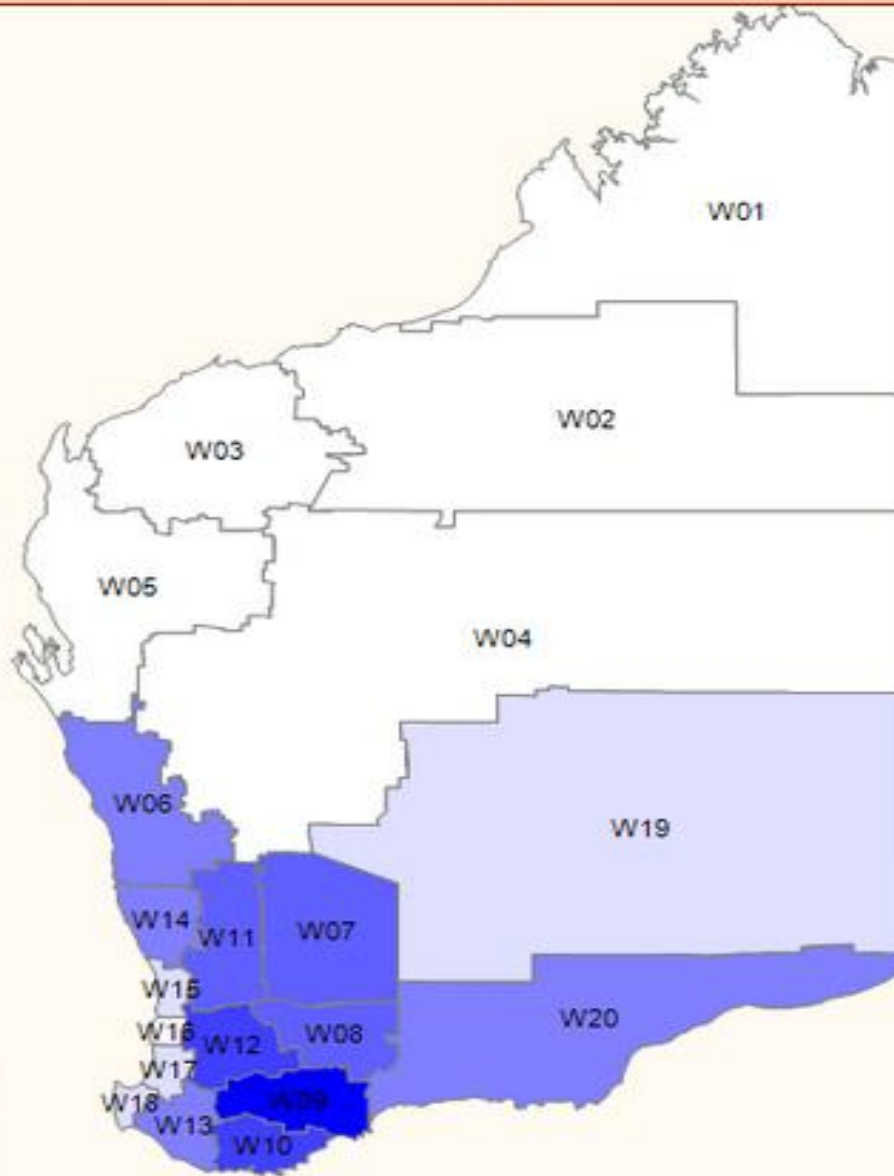
Division	Area	2021/22	2022/23	Diff	Diff%
Far North	Q01	0	1	1.0	0.0%
Far North	Q02	12,053	10	-2.1	-17.0%
North West	Q03	29,321	23	-6.3	-21.6%
North West	Q04	0.0	0.0	0.0	0.0%
North West	Q05	48,895	58	9.1	18.6%
North West	Q06	233,371	253	19.6	8.4%
Northern	Q07	24,194	30	5.8	24.0%
Mackay	Q08	0	0	0.0	0.0%
Fitzroy	Q09	44,568	67	22.4	50.3%
Mackay	Q10	339,709	388	48.3	14.2%
Mackay	Q11	21,439	86	64.6	301.1%
Central West	Q12	1,738.44	2,458.00	719.6	41.4%
Central West	Q13	7,806	8	0.2	2.5%
Central West	Q14	427,215	390	-37.2	-8.7%
Central West	Q15	495,055	938	442.9	89.5%
Central West	Q16	0	0	0.0	0.0%
Central West	Q17	246,799	324	77.2	31.3%
South West	Q18	469,334	630	160.7	34.2%
South West	Q19	45,816	0	-45.8	-100.0%
South West	Q20	234,298	436	201.7	86.1%
South West	Q21	607.16	691	83.8	13.8%
South West	Q22	482,756	575	92.2	19.1%
South West	Q23	1068.39	1143	74.6	7.0%
Wide Bay - Burnett	Q24	0.599	19	18.4	3072.0%
Moreton	Q25	0	0	0.0	0.0%
Darling Downs	Q26	150,033	123	-27.0	-18.0%
Darling Downs	Q27	332.3	345	12.7	3.8%
Darling Downs	Q28	292,563	365	72.4	24.8%
Not Used	Q29	0.0	0.0	0.0	0.0%
Brisbane	Q30	127.0	217.0	36.0	28.3%
Not Available	NA	153.8	163.0	9.2	6.0%
Bulk Class	BC	1262.0	956.0	-306.0	-24.2%
Interior	IL	23.6	10.0	-13.6	-57.7%
Total		8918.6	10707.0	1788.4	20.1%
% Chg					20.1%

Queensland - Production by Wool Statistical Area - Nett Tonnes - July 22 to June 23

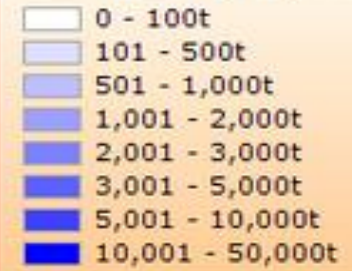
Division	Area	2021/22	2022/23	Diff	Diff%
Far North	Q01	0	1	1.0	0.0%
Far North	Q02	12.053	10	-2.1	-17.0%
North West	Q03	29.321	23	-6.3	-21.6%
North West	Q04	0.0	0.0	0.0	0.0%
North West	Q05	48.895	58	9.1	18.6%
North West	Q06	233.371	253	19.6	8.4%
Northern	Q07	24.194	30	5.8	24.0%
Mackay	Q08	0	0	0.0	0.0%
Fitzroy	Q09	44.568	67	22.4	50.3%
Mackay	Q10	339.709	388	48.3	14.2%
Mackay	Q11	21.439	86	64.6	301.1%
Central West	Q12	1,738.44	2,458.00	719.6	41.4%
Central West	Q13	7.806	8	0.2	2.5%
Central West	Q14	427.215	390	-37.2	-8.7%
Central West	Q15	495.055	938	442.9	89.5%
Central West	Q16	0	0	0.0	0.0%
Central West	Q17	246.799	324	77.2	31.3%
South West	Q18	469.334	630	160.7	34.2%
South West	Q19	45.816	0	-45.8	-100.0%
South West	Q20	234.298	436	201.7	86.1%
South West	Q21	607.16	691	83.8	13.8%
South West	Q22	482.756	575	92.2	19.1%
South West	Q23	1068.39	1143	74.6	7.0%
Wide Bay - Burnett	Q24	0.599	19	18.4	3072.0%
Moreton	Q25	0	0	0.0	0.0%
Darling Downs	Q26	150.033	123	-27.0	-18.0%
Darling Downs	Q27	332.3	345	12.7	3.8%
Darling Downs	Q28	292.563	365	72.4	24.8%
Not Used	Q29	0.0	0.0	0.0	0.0%
Brisbane	Q30	127.0	217.0	90.0	70.9%
Not Available	NA	153.8	163.0	9.2	6.0%
Bulk Class	BC	1262.0	956.0	-306.0	-24.2%
Interlot	IL	23.6	10.0	-13.6	-57.7%
Total		8918.6	10707.0	1788.4	20.1%
% Chg			20.1%		



Wool Production by Tonnes (Season 2022-23)



0 - 99 (um)



Division	Area	2021/22	2022/23	Diff	Diff%
Kimberley	W01	1.9	12.0	10.059	518.2%
Pilbara	W02	0.0	5.0	5	0.0%
Pilbara	W03	0.0	0.0	0	0.0%
Central	W04	15.1	45.0	29.854	197.1%
Central	W05	18.8	12.0	-6.811	-36.2%
Central	W06	2602.9	2895.0	292.104	11.2%
Midlands	W07	4553.1	4221.0	-332.06	-7.3%
Upper Great Southern	W08	3236.7	3633.0	396.286	12.2%
Lower Great Southern	W09	9874.7	10136.0	261.332	2.6%
Lower Great Southern	W10	6554.3	6938.0	383.678	5.9%
Midlands	W11	4383.3	4266.0	-117.31	-2.7%
Upper Great Southern	W12	9968.0	9721.0	-246.95	-2.5%
South West	W13	2858.3	2695.0	-163.28	-5.7%
Midlands	W14	2467.2	2767.0	299.787	12.2%
Perth	W15	419.0	459.0	39.97	9.5%
South West	W16	43.8	41.0	-2.788	-6.4%
South West	W17	504.7	380.0	-124.68	-24.7%
South West	W18	272.0	264.0	-7.969	-2.9%
South Eastern	W19	176.6	157.0	-19.597	-11.1%
South Eastern	W20	2693.4	2527.0	-166.4	-6.2%
Not Available	NA	5939.5	6487.0	547.461	9.2%
Bulk Class	BC	9404.2	10212.0	807.773	8.6%
Interlot	IL	523.2	485.0	-38.205	-7.3%
	Total	66510.7	68358.0	1847.26	2.8%
	% Chg				

Western Australia - Production by Wool Statistical Area - Nett Tonnes - July 22 to June 23

Division	Area	2021/22	2022/23	Diff	Diff%
Kimberley	W01	1.9	12.0	10.059	518.2%
Pilbara	W02	0.0	5.0	5	0.0%
Pilbara	W03	0.0	0.0	0	0.0%
Central	W04	15.1	45.0	29.854	197.1%
Central	W05	18.8	12.0	-6.811	-36.2%
Central	W06	2602.9	2895.0	292.104	11.2%
Midlands	W07	4553.1	4221.0	-332.06	-7.3%
Upper Great Southern	W08	3236.7	3633.0	396.286	12.2%
Lower Great Southern	W09	9874.7	10136.0	261.332	2.6%
Lower Great Southern	W10	6554.3	6938.0	383.678	5.9%
Midlands	W11	4383.3	4266.0	-117.31	-2.7%
Upper Great Southern	W12	9968.0	9721.0	-246.95	-2.5%
South West	W13	2858.3	2695.0	-163.28	-5.7%
Midlands	W14	2467.2	2767.0	299.787	12.2%
Perth	W15	419.0	459.0	39.97	9.5%
South West	W16	43.8	41.0	-2.788	-6.4%
South West	W17	504.7	380.0	-124.68	-24.7%
South West	W18	272.0	264.0	-7.969	-2.9%
South Eastern	W19	176.6	157.0	-19.597	-11.1%
South Eastern	W20	2693.4	2527.0	-166.4	-6.2%
Not Available	NA	5939.5	6487.0	547.461	9.2%
Bulk Class	BC	9404.2	10212.0	807.773	8.6%
Interlot	IL	523.2	485.0	-38.205	-7.3%
Total		66510.7	68358.0	1847.26	2.8%
% Chg			2.8%		

