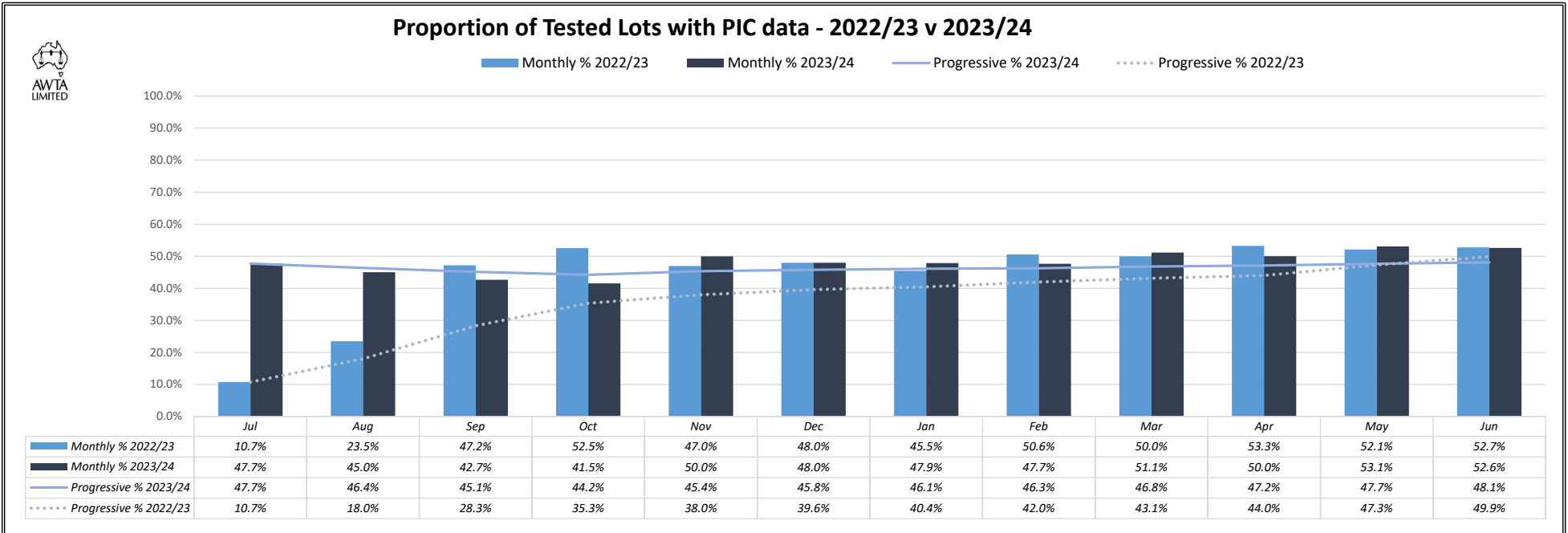
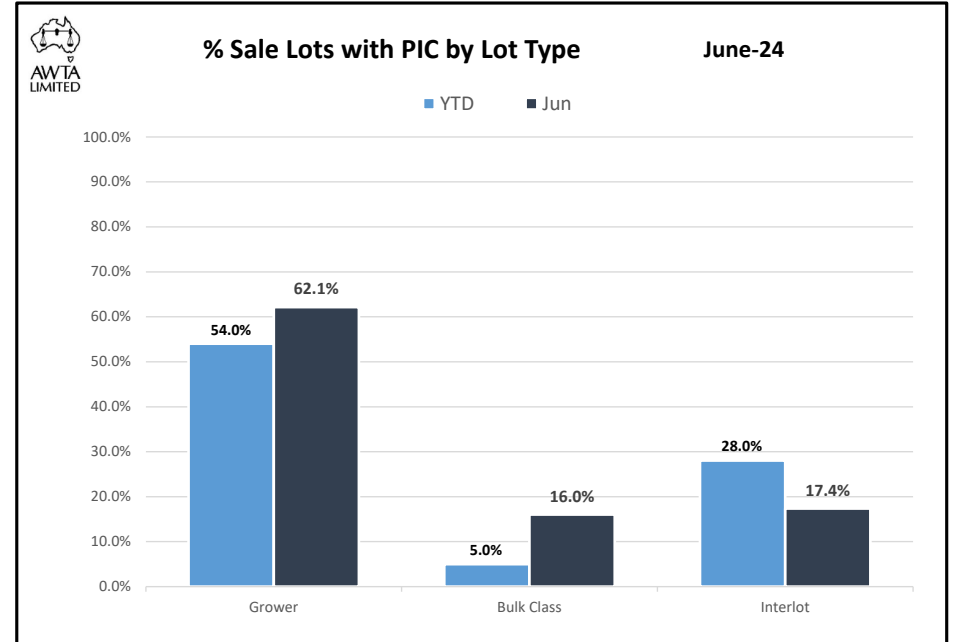
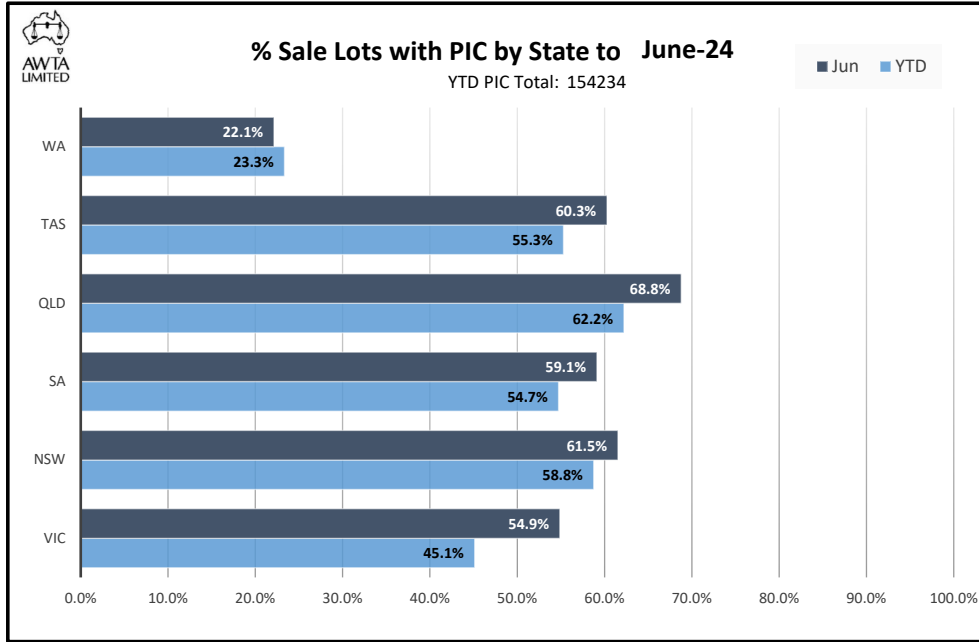
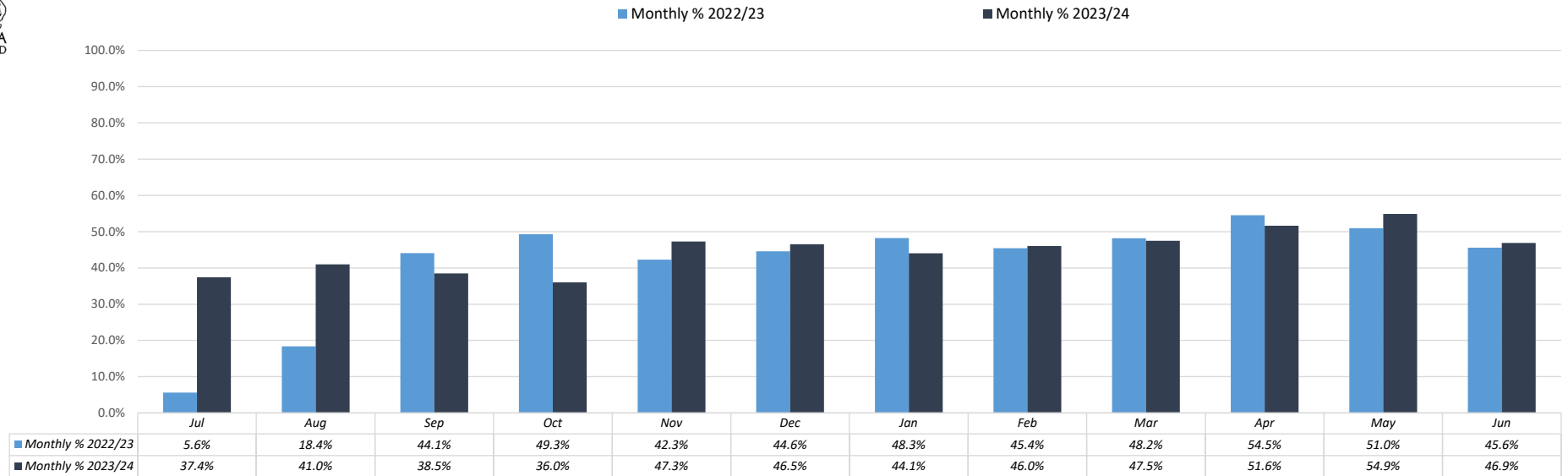


# Australian Wool Industry Property Identification Code (PIC) Transmission Analysis

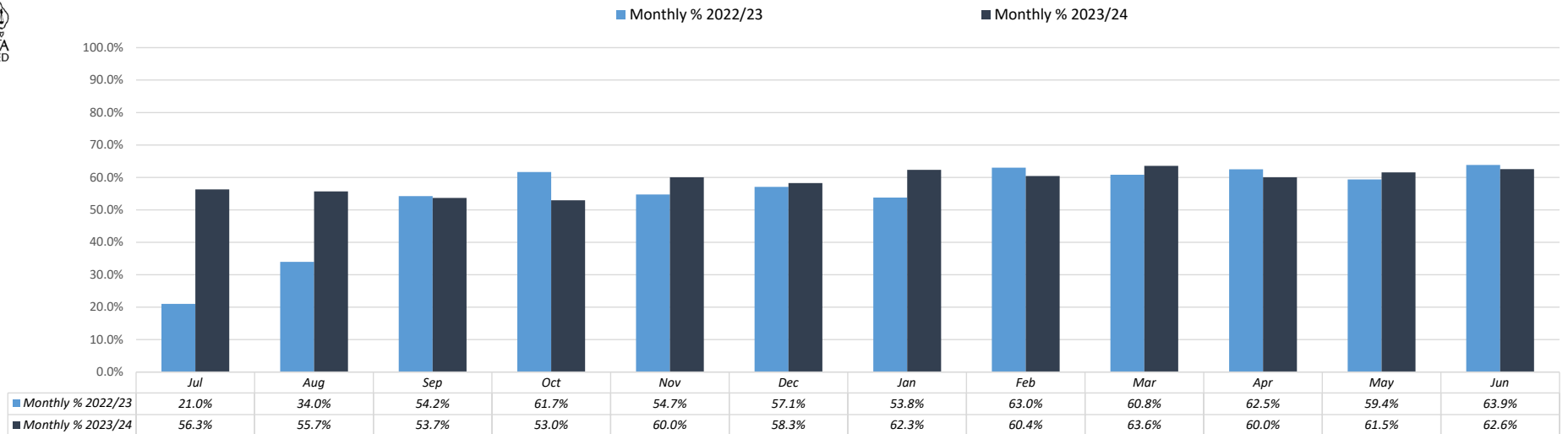




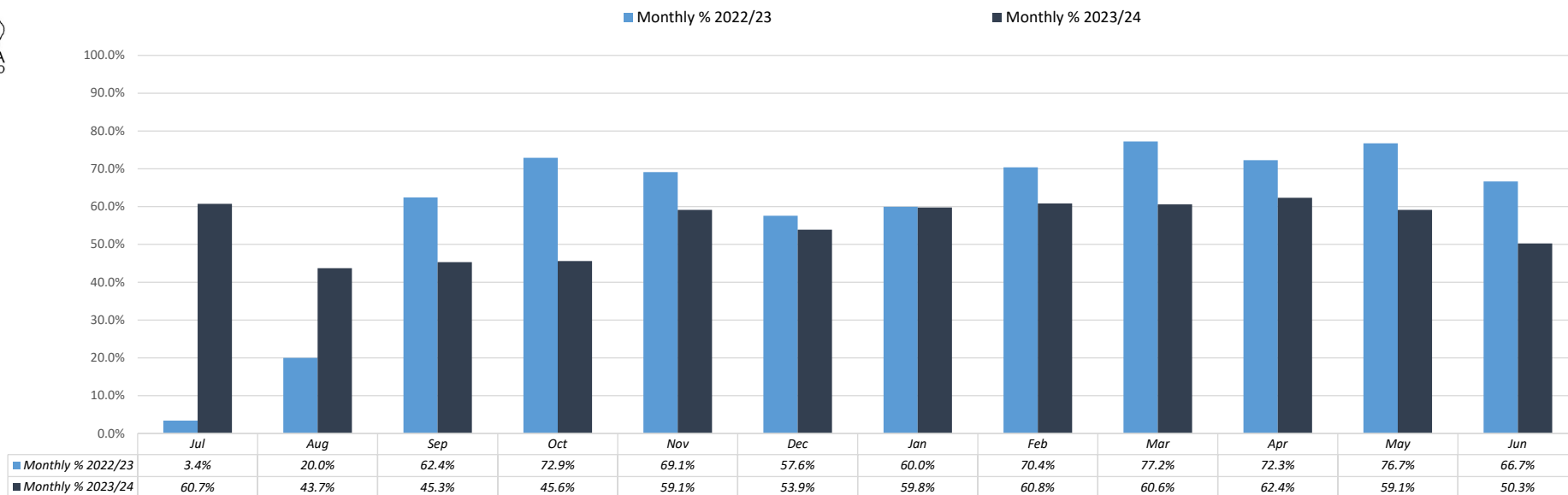
### Victoria : Proportion of Tested Lots with PIC data - 2022/23 v 2023/24



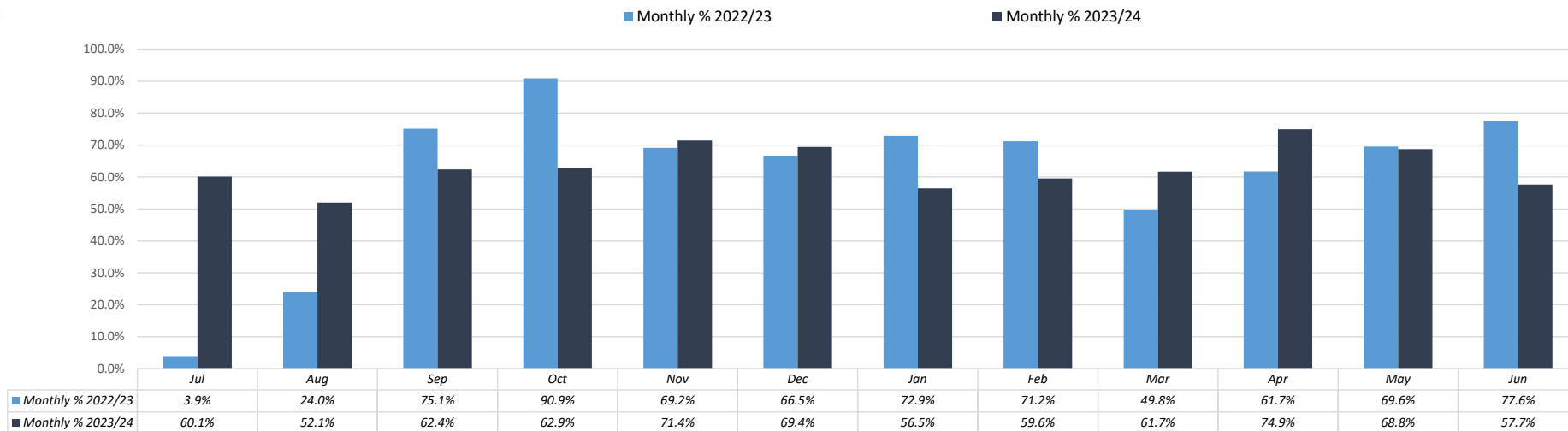
### New South Wales : Proportion of Tested Lots with PIC data - 2022/23 v 2023/24



### South Australia : Proportion of Tested Lots with PIC data - 2022/23 v 2023/24

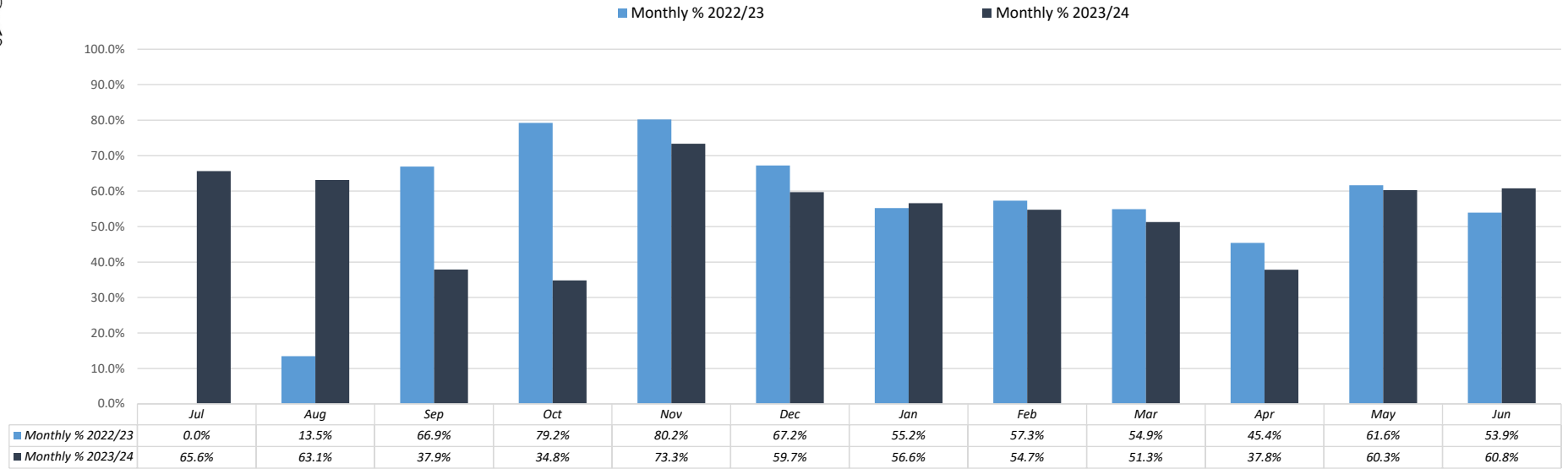


### Queensland : Proportion of Tested Lots with PIC data - 2022/23 v 2023/24





### Tasmania : Proportion of Tested Lots with PIC data - 2022/23 v 2023/24



### Western Australia : Proportion of Tested Lots with PIC data - 2022/23 v 2023/24

